



**BOSCH**  
Invented for life

## DiBos 19 inch Digital Video Recorders - Version 8



- ▶ Models for 6, 12, 18, 24 and 30 analog cameras and up to 32 additional network cameras/video encoders
- ▶ MPEG4 compression
- ▶ Control cameras and AutoDomes with Biphase or Bilinx
- ▶ 2 spot monitor outputs
- ▶ Web-browser remote access and viewing
- ▶ DVD-RW for exporting video clips
- ▶ Connectable to Bosch alarm panels
- ▶ Easy to use and powerful user interface

DiBos uses Bosch's proven state of the art digital recording and communications technology and takes video surveillance to a new level. It is an integral part of overall security solutions for a wide range of applications – including banks, large retailers, railway stations, airports, city centers, industrial facilities, and office buildings.

Customers can retrieve vital images and share information faster than ever before. They can better assess critical situations and take action immediately. Whether they're on site or at a remote network location, authorized personnel have quick, convenient access to information so they can operate more effectively and efficiently.

DiBos can store up to 450/375 ips (NTSC/PAL) on 30 composite video inputs. As many as 10 audio data streams can be recorded on a 30-video channel unit. Users can connect up to 32 additional network cameras or network video encoders and store up to 30/25 ips per attached network unit. Every network video encoder can add one additional audio channel. In addition to Bosch MPEG4 network units, DiBos can receive JPEG images from network cameras from numerous manufacturers. The system offers advanced features for viewing and very high flexibility in recording and image access. The real power of DiBos is fast, convenient accessibility to images and information. If required, accessibility to images and information is possible round the clock and

everywhere all over the world. Communication and access to DiBos is possible via private or public networks. For these purposes the system can be connected to a variety of peripheral devices and systems.

The unique, scalable GUI allows live and recorded images from multiple remote systems to be viewed from a single PC or another DiBos. With this powerful tool, security managers can monitor and supervise various locations simultaneously.

Cameras and viewing modes can be programmed or selected manually. Each camera offers in-window pan/tilt/zoom functionality from local or remote facilities. Images are displayed with date/time, location, camera name and status of connected devices such as detectors and sensors.

DiBos can be programmed to respond to specific situations and events automatically. Minimal human intervention is necessary.

In response to alarms, the system can be programmed to transmit images or messages to security personnel or security control center.

Playback is easy thanks to familiar search and navigation functions in a tree structure. Images can be accessed locally or remotely via a company network or the Internet. The customer can select multiple different views from up to 30 cameras.

Fast, powerful image search functions eliminate time-consuming manual searches. Functions include search for image changes, search for criteria such as camera number, recording date/time, and optional ATM transaction data, e. g. credit card number, bank code, account number, and/or amount withdrawn.

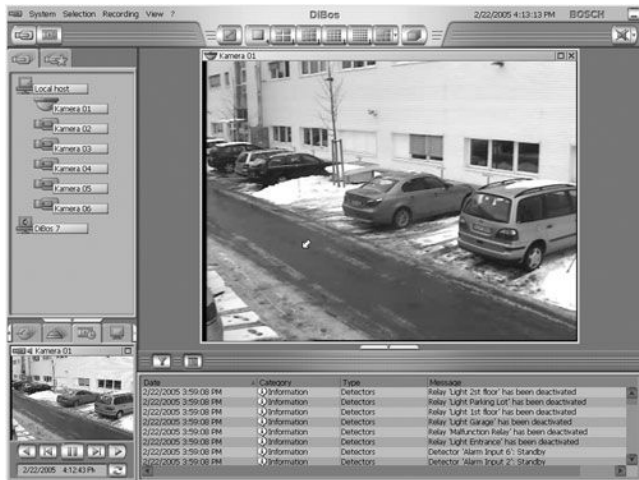
To ensure high security, all access is controlled by user authorization. Profiles are assigned by the system administrator. Events, such as login, logoff, status changes, image transmission, and system shutdown are stored in a database. Video authentication is built in to ensure that DiBos images are not altered in any way. Various storage devices – such as external disk arrays, RAID and NAS devices, and external disk drives – may be used for export and backup of images.

DiBos supports Bilinx for pan/tilt/zoom and camera configuration via the video coax cable.

The configuration wizard makes installation quick and easy.

DiBos serial ports can be connected to Bosch alarm panels, ATM, Allegiant matrices and foyer card readers.

**Live mode**

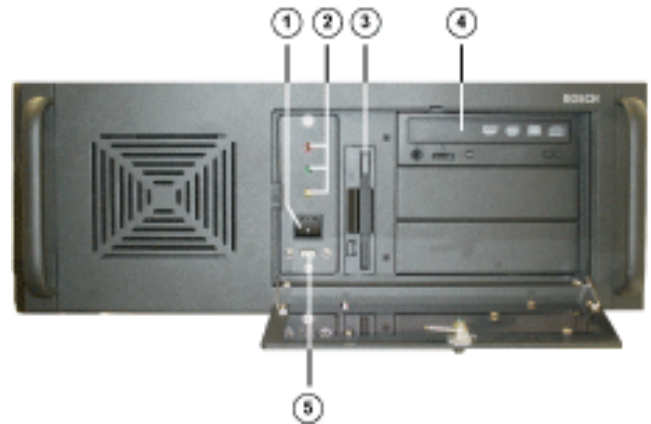


**Playback mode**



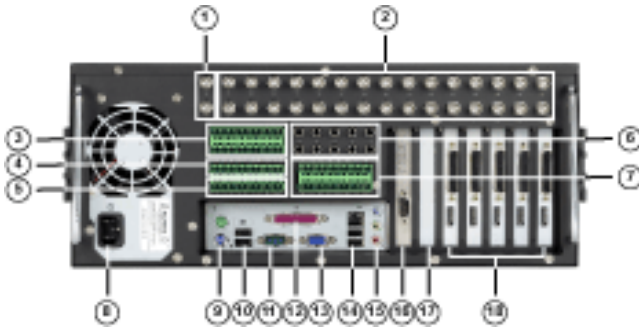
**Installation/Configuration Notes**

**Front view:**



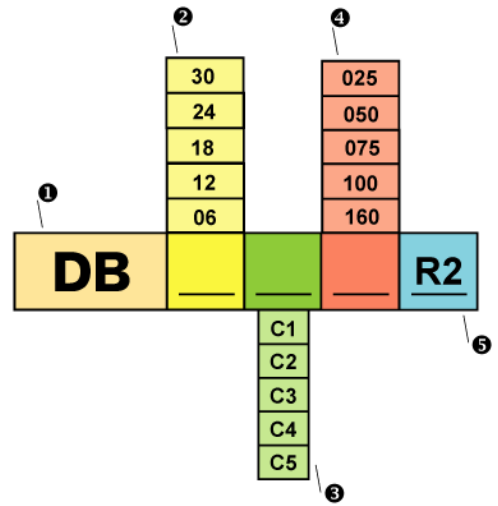
- 1 On/Off switch
- 2 Control lamps:  
Yellow = unused  
Red = Hard disk access  
Green = system is switched on
- 3 Floppy disk drive
- 4 DVD-RW
- 5 USB 2.0

Rear view:



- |  |   |
|--|---|
| 1 Video monitor A<br>Videomonitor B                                    | 10 2x USB 2.0   |
| 2 Video inputs 1 - 30  | 11 Serial port COM1   |
| 3 Alarm inputs 1 - 21  | 12 Parallel interface (Dongle must<br>be plugged in)                  |
| 4 Alarm inputs 22- 32  | 13 VGA monitor  |
| 5 Biphas 1 - 4, malfunction out-<br>puts 1                             | 14 Ethernet (RJ45)<br>2x USB 2.0                                      |
| 6 Audio inputs 1 - 10  | 15 Line In (blue)<br>Speaker Out (green)<br>Microphone In (red), Mono |
| 7 Relay outputs 1 - 16   | 16 Second serial port   |
| 8 Mains connection 100/240VAC,<br>50 / 60 Hz (automatic<br>switchover) | 17 Free for optional PCI plug-in cards                                |
| 9 Mouse (green)<br>Keyboard (purple)                                   | 18 Grabbers 1 - 5   |

Ordering information:



- 1 Type DiBos
- 2 Number of analog camera inputs
- 3 C1 version with max. 6 camera inputs and 750 GB  
C2 version with max. 12 camera inputs and 750 GB  
C3 version with max. 18 camera inputs and 250, 500, 1000, 1600 GB  
C4 version with max. 24 camera inputs and 250, 500, 1000, 1600 GB  
C5 version with max. 30 camera inputs and 250, 500, 1000, 1600 GB
- 4 Disk size (x10 GB)
- 5 Version

E. g. : **DB 30 C5 160 R2**  
30 channel DiBos with 1600 GB storage

## Technical Specifications

### Electrical

Camera Inputs	6 BNC connectors (DB 06 C1) 12 BNC connectors (DB 12 C2) 18 BNC connectors (DB 18 C3) 24 BNC connectors (DB 24 C4) 30 BNC connectors (DB 30 C5)
Composite video signal	1 Vpp, 75 Ohm
Video outputs (loop through)	Via breakout cable
Recording resolution	PAL: 352 x 288 (CIF), 704 x 288 (2CIF) NTSC: 352 x 240 (CIF), 704 x 240 (2CIF)

### Network Devices

DB 06 C1 xxx R2 DB 12 C1 xxx R2 DB 18 C3 xxx R2	16 video/audio MPEG4 data streams from Bosch/VCS network or JPEG devices
DB 24 C4 xxx R2 DB 30 C5 xxx R2	32 video/audio MPEG4 data streams from Bosch/VCS network or JPEG devices

Compression Method	MPEG4			
DiBos device	IPS CIF (PAL)	IPS CIF (NTSC)	IPS 2CIF (PAL)	IPS 2CIF (NTSC)
DB 06 C1 xxx R2	75	90	50	60
DB 12 C2 xxx R2	150	180	100	120
DB 18 C3 xxx R2	225	270	150	180
DB 24 C4 xxx R2	300	360	200	240
DB 30 C5 xxx R2	375	450	250	300

Image size	Configurable from approx. 1.5 kB to 20 kB
IPS PAL per channel	0,5; 1; 2; 3; 4; 5; 6; 8; 12,5; 25
IPS NTSC per channel	0,5; 1; 2; 3; 5; 6; 7,5; 10; 15; 30
Audio Inputs	2, 4, 6, 8, 10, cinch connector, line in signal, 16 KHz sampling rate
Audio Outputs	1, line out signal, 1/8" mini-plug (3,5 mm)
Alarm Inputs (NO / NC)	32 Switching voltage (high): >2 VDC Switching voltage (low): <0,5 VDC Input voltage: max. 40 VDC Impedance: 22 kOhm pull up (+5 V)
Malfunction relay output	1 Voltage range: 30 VAC - 40 VDC Switching current: max. 500 mA AC or DC Switching power: max. 10 VA
Relay Outputs (NO / NC)	16 Voltage range: 30 VAC - 40 VDC Switching current: max. 500 mA AC or DC Switching power: max. 10 VA
Spot monitor output	2 CVBS outputs for full screen or sequences from connected analog cameras
Bilinx control	For AutoDome control and Dinion camera configuration via coax
PTZ control	Bilinx: Via coax cable, up to 30 AutoDome units. Biphase: Up to 16 AutoDome units. RS 232: Protocols from Bosch, Panasonic, Pelco (D-Protocol), JVC, SAE are supported. RS 232: Via Console Port of any Allegiant matrix.

Storage capacity (internal hard disk)	250 GB, 500 GB, 750 GB, 1000 GB, 1600 GB (8 GB are needed for the operating system and video system software)
Video output	1x VGA
Ethernet	10/100/1000Base-T, bandwidth-limited
CPU	Intel P4 (min. 3 GHz)
RAM	1024 MB
RS 232	2
USB 2.0	5
DVD-RW	Included
Power supply	100 / 240 VAC, 50 / 60 Hz (auto switch)
Typical power consumption	approx. 150 W
Power consumption	max. 210 W
Operating system	Microsoft Windows® XP Embedded
Web Browser	Microsoft Internet Explorer 6 or higher, on Windows 2000 or Windows® XP
Export of video/audio datas	DiBos-format or ASF-format on DVD-RW, USB-device or network drive
Image Printer	via USB (with Windows XP drivers)

### Mechanical facilities

Dimensions (H x W x D)	17,5 x 48,0 x 54,5 cm (7 x 19 x 21.5 inch)
Weight	16 - 20.4 kg (25 - 55 lb), dependent on model

### Environmental conditions

Operating temperature	+5 °C to +40 °C (41 ° to 104 °F)
Storage temperature	-10 °C to +60 °C (-14 °F to 140 °F)
Relative humidity in operation	15% to 80%, no condensation
Relative humidity when stored	8% to 80%, no condensation

### Electromagnetic Compatibility (EMC)

• USA	FCC Part 15, Class A
• EU	EMC Directive 89/336/EEC Interference immunity: Conformance with EN 50130-4 requires an external UPS. The product is tested according to EN 50130-4, with the exception of voltage interruption to EN 50130-4:1995 Chapter 3/8/04. To comply with EN 50130-4, an external UPS is required. The UPS (Pulsar ellipse 500) is not contained in the product and must be ordered separately. The UPS should be dimensioned for at least 480 VA. Interference emission: EN 55022, Class B Mains power fluctuations: EN 61000-3-2 Voltage fluctuations: EN 61000-3-3

### Safety

• USA	UL60950 Third edition (2000) CAN/CSA 22.2 No.60950-00, Third edition (2000)
• EU	EN 60950: 2000

Warranty	3 years
Approved anti virus software	Norton Anti Virus McAfee Virus Scan Trend Micro

## Hardware and Software options

### DiBos software receiver/IP recorder

(for alarm image streams via network and/or ISDN and / or PSTN)

DB SR 002	DiBos software receiver, no network camera/network video encoder can be connected
DB SR 162	DiBos software receiver/IP recorder, up to 16 network cameras/network video encoders can be connected
DB SR 322	DiBos software receiver/IP recorder, up to 32 network cameras/network video encoders can be connecte

### Requirements for computer with DiBos receiver software/IP recorder:

Operating system	Windows XP Professional
CPU	2 GHz or more, Pentium® 4
RAM	512 MB
VGA card	1024 x 768, 32-Bit color depth
USB-connector	for dongle

### Country kits

(All versions include manuals, keyboard and mouse)

DB EK 012 DA	Danish version
DB EK 012 DE	German version
DB EK 012 EN	English version
DB EK 012 ES	Spanish version
DB EK 012 FI	Finnish version
DB EK 012 FR	French version
DB EK 012 IT	Italian version
DB EK 012 NL	Dutch version
DB EK 012 NO	Norwegian version
DB EK 012 PT	Portuguese version
DB EK 012 SV	Swedish version

### External hard disk expansion

(For further information please contact Bosch Security Systems)

DB EK 021	SCSI-adapter for external hard disk drive array. Supports various Bosch disk arrays up to 16 TB (only for DB 06, due to required PCI slot)
-----------	--

### Interface Extension for Automated Teller Machines (ATM)

(For further information please contact Bosch Security Systems)

DB SE 013	Up to 4 ATM
DB SE 014	Up to 2 ATM

### Communication Extension

(For further information please contact Bosch Security Systems)

DB EK 031	PCI modem card (not DB 30 C5 100 and DB 30 C5 160)
-----------	--

### Interface Extension for Bosch Alarm Panels

DB SE 031	Connection via RS 232 to 9000 Series (Radionics), UGM 2020, UEZ 2000/1000, BZ 500, NZ/BZ 1060, NZ/BZ 1012, NZ 1008
-----------	--

### Graphical adapter

(For further information please contact Bosch Security Systems)

DB EK 081	AGP-Graphic adapter for VGA-output, DVI-I and composite monitor output
-----------	--

Windows® and Windows®xp, are registered trademarks of Microsoft Corporation.

Intel Pentium® and Celeron® are registered trademarks of Intel Corporation.

## Ordering Information

### Model | Description

DB 06 C1 075 R2 DiBos Digital Video Recorder	6 channel DiBos with 750 GB HDD, DVD-RW, 16 IP devices.
DB 12 C2 075 R2 DiBos Digital Video Recorder	12 channel DiBos with 750 GB HDD, DVD-RW, 16 IP devices.
DB 18 C3 025 R2 DiBos Digital Video Recorder	18 channel DiBos with 250 GB HDD, DVD-RW, 16 IP devices.
DB 18 C3 050 R2 DiBos Digital Video Recorder	18 channel DiBos with 500 GB HDD, DVD-RW, 16 IP devices.
DB 18 C3 100 R2 DiBos Digital Video Recorder	18 channel DiBos with 1000 GB HDD, DVD-RW, 16 IP devices.
DB 18 C3 160 R2 DiBos Digital Video Recorder	18 channel DiBos with 1600 GB HDD, DVD-RW, 16 IP devices.
DB 24 C4 025 R2 DiBos Digital Video Recorder	24 channel DiBos with 250 GB HDD, DVD-RW, 32 IP devices.
DB 24 C4 050 R2 DiBos Digital Video Recorder	24 channel DiBos with 500 GB HDD, DVD-RW, 32 IP devices.
DB 24 C4 100 R2 DiBos Digital Video Recorder	24 channel DiBos with 1000 GB HDD, DVD-RW, 32 IP devices.
DB 24 C4 160 R2 DiBos Digital Video Recorder	24 channel DiBos with 1600 GB HDD, DVD-RW, 32 IP devices.
DB 30 C5 025 R2 DiBos Digital Video Recorder	30 channel DiBos with 250 GB HDD, DVD-RW, 32 IP devices.
DB 30 C5 050 R2 DiBos Digital Video Recorder	30 channel DiBos with 500 GB HDD, DVD-RW, 32 IP devices.
DB 30 C5 100 R2 DiBos Digital Video Recorder	30 channel DiBos with 1000 GB HDD, DVD-RW, 32 IP devices.
DB 30 C5 160 R2 DiBos Digital Video Recorder	30 channel DiBos with 1600 GB HDD, DVD-RW, 32 IP devices.

### Hardware Accessories

DB EK 012 DA English Keyboard and Danish Manuals
DB EK 012 DE German Keyboard and Manuals
DB EK 012 EN English Keyboard and Manuals
DB EK 012 ES English Keyboard and Spanish Manuals
DB EK 012 FI English Keyboard and Finnish Manuals
DB EK 012 FR English Keyboard and French Manuals
DB EK 012 IT English Keyboard and Italian Manuals
DB EK 012 NL English Keyboard and Dutch Manuals
DB EK 012 NO English Keyboard and Norwegian Manuals
DB EK 012 PT English Keyboard and Portuguese Manuals
DB EK 012 SV English Keyboard and Swedish Manuals
DB EK 021 SCSI Card Adapter and SCSI Cable
Built in the factory. Included SCSI cable. DiBos Micro: Only for DB 06, due to required PCI slot. DiBos 19 inch: Not for DB 30 C5 100 R2 and DB 30 C5 160 R2, due to required PCI slot.

## Ordering Information

### Model | Description

DB EK 061 SCSI Card Adapter and SCSI Cable	Expansion. Included SCSI cable. DiBos Micro: Only for DB 06, due to required PCI slot. DiBos 19 inch: Not for DB 30 C5 100 R2 and DB 30 C5 160 R2, due to required PCI slot.
DB SE 013 ATM Kit up to 4 ATM	Up to 4 ATM. Included ATM interface box DTP3, connection cable DiBos - DTP3, software unlock of 4 ATM and 4 foyer card readers and bank code lock. Consult your local Bosch Security Systems Sales office for further information concerning ATM protocols.
DB SE 014 ATM Kit up to 2 ATM	Up to 2 ATM. Included ATM interface box DTP3, connection cable DiBos - DTP3, software unlock of 2 ATM and 4 foyer card readers and bank code lock. Consult your local Bosch Security Systems Sales office for further information concerning ATM protocols.
DB EK 016 DO ATM Upgrade Kit for DTP3	Expansion from 2 ATM to 4 ATM.
DB EK 711 ISDN Package	Requires one free PCI slot.
DB SE 041 Tele Service Package for DiBos	PC Anyware Host Version 10.5
DB EK 831 OVS Interface Converter (OVS)	RS 485/RS 232 interface converter.
DB EK 823 9M Connection Cable 9-pole, between DTP3 and OVS	
DB EK 721 RS 232 PCI Interface Expansion for RS 232	PCI card for 2x RS 232. Requires one free PCI slot.
DB EK 211 DCF Radio Clock Receiver DCF-77	Requires one free RS 232 interface.
DB EK 211 DCFC Extension Cable 50 m for DCF-77	
DB EK 201 UPS Uninterruptable Power Supply UPS	
DB EK 031 Internal Modem Card	PCI modem card (not DB 30 C5 100 and DB 30 C5 160).
DB EK 081 TV-Out-Card	AGP graphical adapter for VGA output, DVI-I and composite monitor output.

### Software Options

DB SE 031 Software Interface to Bosch Alarm Panels	Connection via RS 232 to 9000 Series (Radionics), UGM 2020, UEZ 2000/1000, BZ 500, NZ/BZ 1060, NZ/BZ 1012, NZ 1008.
DB SR 002 Receiver Software	DiBos receiver software for Win XP PC. Includes USB dongle. No recording of IP cameras.
DB SR 162 Receiver Software/IP Recorder	DiBos receiver software for Win XP PC. Includes USB dongle. Recording up to 16 cameras.
DB SR 322 Receiver Software/IP Recorder	DiBos receiver software for Win XP PC. Includes USB dongle. Recording up to 32 cameras.

**Americas:**  
 Bosch Security Systems  
 130 Perinton Parkway  
 Fairport, New York, 14450, USA  
 Phone: +1 585 223 4060  
 Fax: +1 800 289 0096  
 security.sales@us.bosch.com  
 www.boschsecurity.us

**Europe, Middle East, Africa:**  
 Bosch Security Systems B.V.  
 P.O. Box 80002  
 5600 JB Eindhoven, The Netherlands  
 Phone: +31 40 27 83955  
 Fax: +31 40 27 86668  
 emea.securitysystems@bosch.com  
 www.boschsecurity.com

**Asia-Pacific:**  
 Bosch Security Systems Pte Ltd  
 38C Jalan Pemimpin  
 Singapore 577180  
 Phone: +65 6319 3450  
 Fax: +65 6319 3499  
 apr.securitysystems@bosch.com  
 www.boschsecurity.com

### Represented by