



UHI-SBG-0 Series Indoor Housing



- ▶ For 1/4 in., 1/3 in., and 1/2 in. CCD cameras
- ▶ Feed-through wiring option
- ▶ Glass fiber reinforced ABS
- ▶ Easy installation
- ▶ Full camera accessibility
- ▶ Economical Indoor Housing with Mount
- ▶ Includes aluminum bracket

The UHI-SBG-0 Housing is smartly styled for indoor use. This housing meets customers' demands for attractive housings that are both cost competitive and easy to install. They fit a wide range of 1/4 in., 1/3 in., and 1/2 in. format CCD cameras and varifocal lenses.

Functions

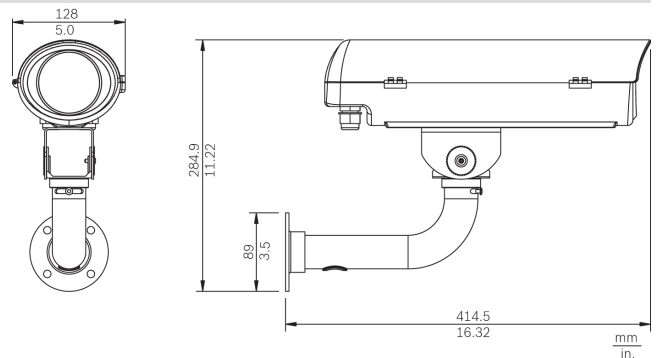
The design of these housings is unique. Removal of two tamper-resistant screws is all that is necessary to open the cover and totally expose the camera and lens. This allows access to all camera and lens controls when the camera is in its mounted position. Power and video cabling can be routed through liquid tight fittings in the bottom or rear of the housing. To complete this set, a sturdy aluminum feed-through mount is added.

Certifications and Approvals

Product Safety

CE, UL, cUL

Installation/Configuration Notes



Parts Included

Quantity	Component
1	Indoor housing
1	Aluminum bracket

Technical Specifications

Electrical

Maximum Camera Power	Max. 10 W 24 VAC–230 VAC, 50/60 Hz, 0.5 A
----------------------	--

Mechanical

Max Camera/Lens Size (W x H x L)	80 x 60 x 210 mm (3.1 x 2.3 x 8.2 in.)
Cable Entry	Two liquid tight rear fittings accept cable diameters from 6.5 mm to 10.5 mm (0.26 in. to 0.42 in.). Two bottom feed-through liquid tight fittings accept cable diameters from 4.0 mm to 7.0 mm (0.16 in. to 0.28 in.).
Window	3 mm (0.12 in.) thick glass.
Housing Mounting	Includes one J-mount. Four (4) available 1/4"-20 tapped holes.
Camera Mounting	Removable camera bracket. Mounted with one screw.
Construction/Finish	Reinforced with glass fiber ABS, stainless steel hardware.
Finish	Dark mushroom.
Dimensions	See UHI-SBG-0 drawing.
Weight	1.0 kg (2.2 lb) including bracket.

Environmental

Temperature	-10°C (14°F) to 50°C (122°F)
Enclosure Protection	IP30 (indoor use only)

Ordering Information

UHI-SBG-0 Series Indoor Housing **UHI-SBG-0**
for camera/lens lengths up to 210 mm (8.2 in.)

Europe, Middle East, Africa:
Bosch Security Systems B.V.
P.O. Box 80002
5600 JB Eindhoven, The Netherlands
Phone: +31 40 2577 284
Fax: +31 40 2577 330
emea.securitysystems@bosch.com
www.boschsecurity.com

Americas:
Bosch Security Systems, Inc.
130 Perinton Parkway
Fairport, New York, 14450, USA
Phone: +1 800 289 0096
Fax: +1 585 223 9180
security.sales@us.bosch.com
www.boschsecurity.us

Asia-Pacific:
Bosch Security Systems Pte Ltd
38C Jalan Pemimpin
Singapore 577180
Phone: +65 6319 3450
Fax: +65 6319 3499
apr.securitysystems@bosch.com
www.boschsecurity.com

Represented by