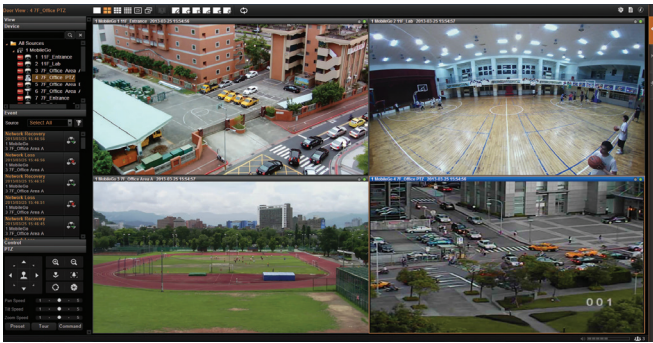


ACTi CMS 2

ACTi Central Management System

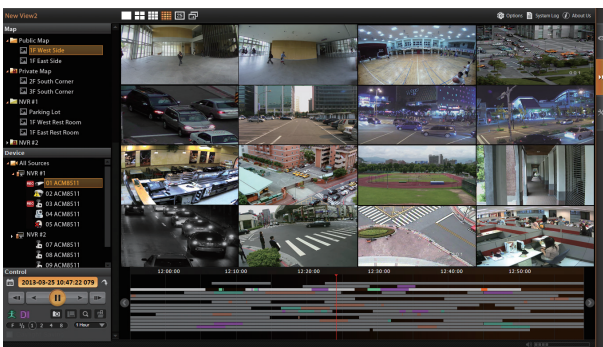
- Manage unlimited number of NVR servers
- Live view local up to 64 channels
- Synchronized playback local up to 64 channels
- Export video with RAW and AVI formats
- Event trigger, response and notification
- Mobile Client, Web Client, Workstation
- Location-based management with eMap
- TV Wall support by additional software license



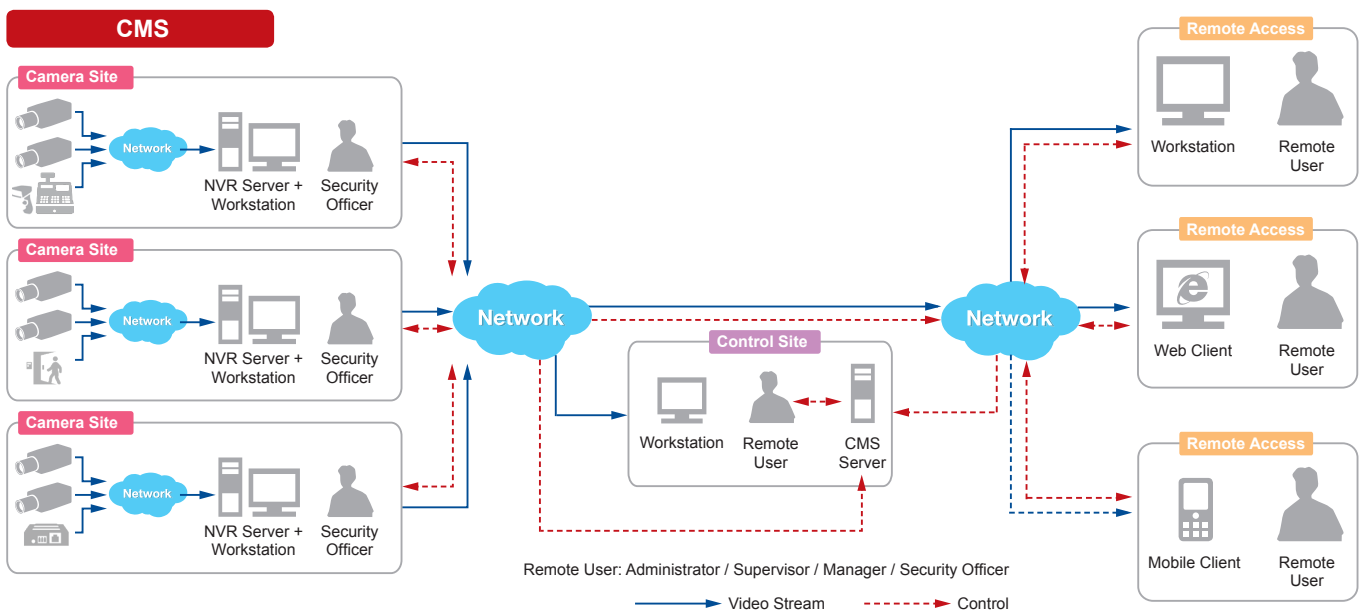
SPECIAL FEATURES

Up to 64-channel synchronized playback

Mobile client (iOS, Android) access



SOLUTION ARCHITECTURE



PRODUCT SPECIFICATION

CMS 2

• General

Full Name	ACTi Central Management System v2.0
Maximum Number of NVR	Unlimited
Maximum Number of Clients	1 local, 5 remote (concurrent)
Maximum Number of Cameras	Unlimited
Maximum Number of POS Devices	6400
Maximum Number of Access Control and Network I/O Devices	6400
Free License	2 channels for video devices
Compression	H.264, MPEG-4, MJPEG
NVR Management	Import management settings of NVR servers

• Live View

Display Layout Mode	1, 4, 5, 6, 8, 9, 10, 12, 16, 18, 24, 25, 35, 36, 48, 49, 64, Custom
View Manager	An interface to define display layouts and the pre-set cameras within layout in the public or private view
View Patrol	Automatic switch between different views or devices
View Panel	Contains the list of pre-defined views for quick launch
Instant playback	Instant playback in live view window
Layout Manager	An interface to define display layouts and the pre-set cameras within layouts; full-screen mode available
Device Panel	Drag and drop video source from device panel into display layout
Digital Zoom	Zoom in/out digitally by mouse scroll wheel
Manual Recording / Snapshot	Instant recording to NVR 3.0 Server upon mouse click / Instant snapshot upon mouse click
Event Display Panel	Alarm; Connection loss/recovery between server and client; the allocated disk space full; Point-of-sale (POS), access control and network I/O status
Two-Way Audio	Audio sound from and to all the audio supported devices; audio broadcast to multiple devices at the same time
Dual Stream Management	Live view of stream 1 or stream 2 of dual stream devices

• e-Map

Layout	Area maps with camera icons, small live view windows; view linker; source linker; event trigger
Setup	E-Map image upload; camera positioning; vision angle and pointed direction of camera; view positioning; source positioning; extended devices for Point-of-sale (POS), Access Control, Network I/O, Car Park
PTZ Mode	Mouse PTZ mode to control e-Map video streams

• PTZ

Control	Pan, tilt and zoom controls; speed control; both buttons and overlay controls
Preset Points and Tours	Activate NVR preset points or auto tours between preset points
Joystick	USB based joystick supported
Default Protocol	Auto-detect camera's PTZ protocol. Available protocols: ACTi, Pelco-P, Pelco-D, Dynacolor, Visca

• Search & Playback

Recording Search	Search video recordings by time, event, channel and bookmark from multiple NVRs, and listed as clickable thumbnails for full-size view and snapshot download
Playback Control	Continuous forward and backward playback with speeds 1x/2x/4x/8x or frame-by-frame; pause; stop
Synchronized Playback	64 channels
Manual Snapshot	Instant snapshot from playback upon mouse click
Digital Zoom	Zoom in/out digitally by mouse scroll wheel or by zoom control buttons
Video Export	Export video clips in AVI or RAW format; text overlay and point-of-sale (POS) transaction data supported

• Event Management

Event Source	Receive events from multiple NVR servers
Event Trigger	NVR: source loss and recovery; schedule service start and stop; disk status; bookmark; GPS positioning/reception Loss Device: video motion detection; passive IR sensor; external device through digital input; video loss and recovery; network loss and recovery; point-of-sale (POS) status; network I/O status; access control allowed/denied
Event Response	NVR: record video; play beep sound; execute system command to activate other programs; e-mail notification Device: pop-up window with live video; switch to hotspot window; play beep sound; activate external device through digital output; upload snapshot to FTP server; execute system command to activate other programs; e-mail notification with snapshots; command a PTZ device to go to a preset point
Manual Event	Manually activate external devices through digital output via live view monitor

• Video Analytics

Smart Search	Smart search of recorded videos by Motion Detection and Tamper
--------------	--

• System

Permission Control	Unlimited number of users, Active Directory, customizable permissions for user groups; playback password protected, password validity period
Language	Multi-language support
Language Import / Export	Possibility to import or export language packs for convenient local language management
Customizable User Interface	Define the layout of user interface for live view and playback
GPS Position	Manual setting for ACTi Mobile Client Android Application and URL command integration only

• Remote Access

PC Client Program	User interface program (Workstation) with live view, PTZ, playback, e-Map, event management, setup
PC Web Browser	Microsoft Internet Explorer with live view, PTZ, playback, e-Map, event management, setup
Mobile Client Program	Mobile device application (Active Mobile Client) supports live view, PTZ control, event or time based search and playback. Supported devices: iPhone, iPad, iTouch and Android device

• System Requirements*

Display Mode	Live Layout	Channels	
		1-1,600	1,601-Unlimited
Server PC with Local Client	1-16	Intel Core 2 Quad 2.4 GHz, 4GB RAM	Intel i5 2.4 GHz, 4GB RAM
	17-64	Intel i5 2.4 GHz, 4GB RAM	Intel i7-920 2.67 GHz, 4GB RAM
Server PC without Local Client	0	Intel Core 2 Quad 2.4 GHz, 4GB RAM	Intel i5 2.4 GHz, 4GB RAM
	1-16	Intel Core 2 Quad 2.4 GHz, 4GB RAM	Intel i5 2.4 GHz, 4GB RAM
Remote Client PC	17-64	Intel i5 2.4 GHz, 4GB RAM	Intel i7-920 2.67 GHz, 4GB RAM
Operating System		Windows 7, Windows 8, Windows Server 2012	
Browser		Microsoft Internet Explorer 8.0, 9.0, 10.0	

• Integration

Unified Solution	Fully compatible with ACTi cameras, encoders, NVR 3.0
Open Platform Solution	Support ONVIF compliant devices
Third-Party Integration	Point-of-sale (POS); Access control; Network I/O

* All specifications are subject to change without notice.

* All brand names and registered trademarks are the property of their respective owners.

ACTi CMS 2

Compliant Third-Party Integration Devices	Type	Brand	Product	
	Point-of-sale (POS)	pcAmerica	pcAmerica	
		NCR	Aloha Restaurant	
	IP Door Control	Eterna	HID Armous	
	Car Park	SunPark	SunPark	
	Network I/O	Advantech	ADAM-6060	
			ADAM-6066	
Licensing Part Numbers	Description	Free Channel Bundled	Maximum Number of Channels	Part Number
	ACTi and third-party video device integration license	2	6400	LCMS2000
	POS device integration license	0	6400	LPOS2000
	Access control and network I/O device integration license	0	6400	LEXD2000

* These specifications are based on following camera settings:
 - Single stream mode
 1280x1024, 3Mbps, 18fps, MPEG-4
 - Dual stream mode
 Stream 1: 1280x1024, 3Mbps, 18fps, H.264
 Stream 2: 640x480, High Quality, 18fps, MJPEG
 For more details about system requirements, please refer to Project Planner on www.acti.com