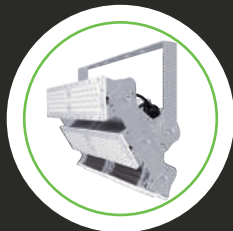


PRODUCT



ULTRA FLOOD LIGHT
T500 SERIES
480W-1440W



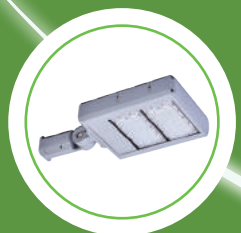
LED FLOOD LIGHT
T400 SERIES
60W-600W



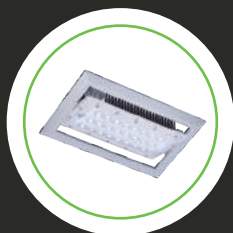
LED Highbay Light
4BAY SERIES
100W-480W



LED VERSATILE LIGHT
T300 SERIES
50W-300W



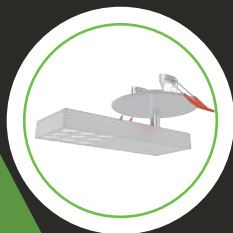
LED STREET LIGHT
L300 SERIES
60W-240W



LED DOWN LIGHT
D300 SERIES
30W-100W



G TRACK



G TRACK
DOWN LIGHT

G-COMIN

Innovative LED Light Manufacturer



SHENZHEN COMING TECHNOLOGY CO.,LTD

+86-755-28462760

info@co-ming.com

www.co-ming.com

Coming Industrial Park

Longgang District

Shenzhen China

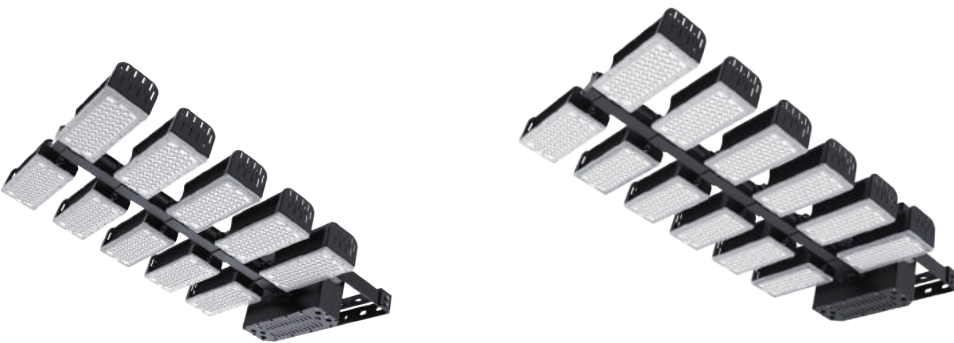
Ultra Flood Light T500



CO-T500-480W
79,200LM
12.0kg±5%
248PCS LED
536×165×579mm

CO-T500-720W
118,800LM
15.8kg±5%
372PCS LED
691×202×579mm

CO-T500-960W
158,400LM
19.9kg±5%
496PCS LED
846×202×579mm



CO-T500-1200W
198,000LM
24.2kg±5%
620PCS LED
1001×277×579mm

CO-T500-1440W
237,600LM
26.5kg±5%
744PCS LED
1156×277×579mm

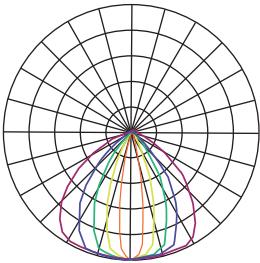
Specifications

| | |
|----------------|------------------------|
| WATTAGE | 480/720/960/1200/1440W |
| DRIVER | MEANWELL |
| CRI | Ra>70 |
| CCT | 2700-6500K |
| RATED VOLTAGE | AC 90-305V, 50/60Hz |
| POWER FACTOR | >0.95 |
| IP GRADE | IP66 |
| HEAT-SINK | ALUMINIUM COOLING FIN |
| OPERATING TEMP | -40℃~60℃ |

| LAMP LUMINOUS FLUX | BEAM ANGLE | LED SOURCE | LED QUANTITY |
|--------------------|--------------|------------|--------------------|
| 165LM/W | 60°/90°/120° | LUMILEDS | 62LEDS EACH MODULE |
| 155LM/W | 30° | LUMILEDS | 62LEDS EACH MODULE |
| 120LM/W | 10° | CREE | 60LEDS EACH MODULE |

Light Distribution

Various replaceable optical lenses



- 10°
- 30°
- 60°
- 90°
- 120°

Original Angle Scale Design



Optional Laser Pointer Device

Double Bracket

Rotatable Module Design

360°

140°



165LM/W

There are more than 50,000 stadiums in the world. Those sports fields not illuminated by G-COMIN provide us with our mission incentive.

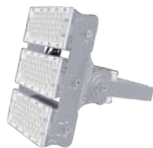
LED Flood Light T400



| CO-T400A-100W | CO-T400B-60W |
|---------------|---------------|
| 16,000LM | 9,600LM |
| 2.9kg±5% | 2.4kg±5% |
| 48PCS LED | 24PCS LED |
| 291×102×266mm | 291×102×266mm |



| CO-T400A-200W | CO-T400B-120W |
|---------------|---------------|
| 32,000LM | 19,200LM |
| 4.2kg±5% | 3.8kg±5% |
| 96PCS LED | 48PCS LED |
| 291×219×334mm | 291×219×334mm |



| CO-T400A-300W | CO-T400B-180W |
|---------------|---------------|
| 48,000LM | 28,800LM |
| 5.6kg±5% | 4.7kg±5% |
| 144PCS LED | 72PCS LED |
| 291×340×324mm | 291×340×324mm |



| CO-T400A-400W | CO-T400B-240W |
|---------------|---------------|
| 64,000LM | 38,400LM |
| 7.4kg±5% | 5.9kg±5% |
| 192PCS LED | 96PCS LED |
| 485×219×334mm | 485×219×334mm |



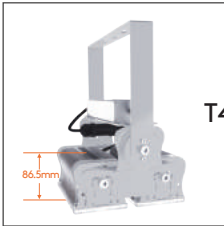
| CO-T400A-600W | CO-T400B-360W |
|---------------|---------------|
| 96,000LM | 57,600LM |
| 10.3kg±5% | 8.6kg±5% |
| 288PCS LED | 144PCS LED |
| 485×340×324mm | 485×340×324mm |

Specifications

| | |
|----------------|---|
| WATTAGE | 60/100/120/180/200/240/300/360/400/600W |
| DRIVER | MEANWELL |
| CRI | Ra>70 |
| CCT | 2700-6500K |
| RATED VOLTAGE | AC 90-305V, 50/60Hz |
| POWER FACTOR | >0.95 |
| IP GRADE | IP65 |
| HEAT-SINK | ALUMINIUM COOLING FIN |
| OPERATING TEMP | -40℃~60℃ |

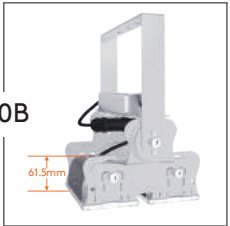
| | 60°/90°/120° | 30° | 10° |
|-------|--------------------|----------|---------|
| | LUMILEDS | LUMILEDS | CREE |
| T400A | 160LM/W | 150LM/W | 120LM/W |
| | 48LEDS EACH MODULE | | |
| T400B | 160LM/W | 150LM/W | 120LM/W |
| | 24LEDS EACH MODULE | | |

Contrast

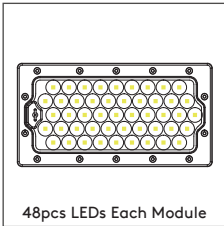


T400A

VS

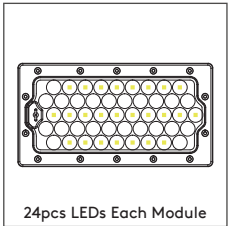


T400B

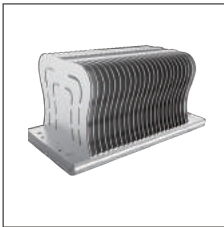


48pcs LEDs Each Module


LED Quantity



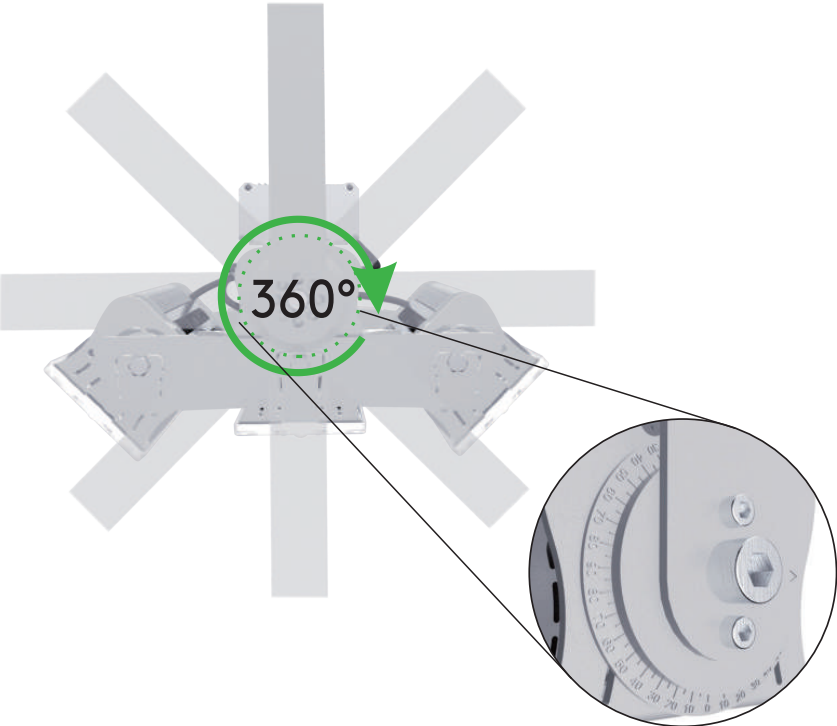
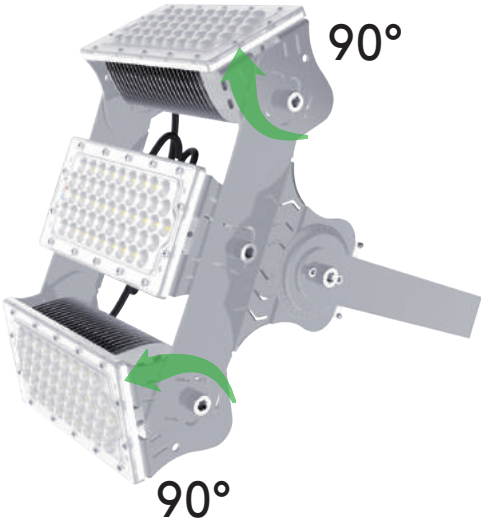
24pcs LEDs Each Module



Heat-Sink



Rotatable Module Design



160LM/W

This 97m tower was every inch the pride of its creators and we've made it even more elegant.

LED Highbay Light 4BAY



CO-4BAY-100W

14,000LM
4.5kg±5%
192PCS LED
429×429×159mm

CO-4BAY-150W

21,000LM
4.5kg±5%
288PCS LED
429×429×159mm



CO-4BAY-200W

28,000LM
5.3kg±5%
384PCS LED
429×429×159mm

CO-4BAY-240W

33,600LM
5.3kg±5%
480PCS LED
429×429×159mm



CO-4BAY-300W

43,500LM
7.1kg±5%
112PCS LED
429×429×225mm

CO-4BAY-400W

58,000LM
7.4kg±5%
144PCS LED
429×429×225mm

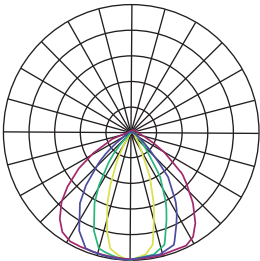
CO-4BAY-480W

69,600LM
7.4kg±5%
192PCS LED
429×429×225mm

Specifications

| | |
|--------------------|--|
| WATTAGE | 100/150/200/240/300/400/480W |
| LIGHT SOURCE | LUMILEDS |
| DRIVER | MEANWELL |
| LAMP LUMINOUS FLUX | 140LM/W±5% (100/150/200/240W) 145LM/W±5% (300/400/480W) |
| CRI | Ra>70/80 |
| CCT | 2700-6500K |
| RATED VOLTAGE | AC 90-305V, 50/60Hz |
| POWER FACTOR | >0.95 |
| BEAM ANGLE | 60°/120° (100/150/200/240W) 30°/60°/90°/120° (300/400/480W) |
| IP GRADE | IP65 |
| HEAT-SINK | ALUMINIUM COOLING FIN / ALUMINIUM RIVET |
| OPERATING TEMP | -40℃~60℃ |

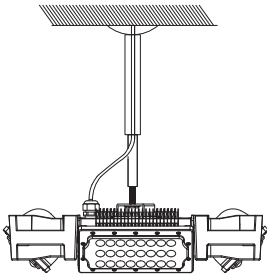
Light Distribution



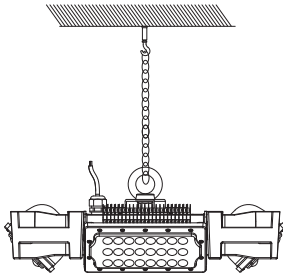
Various replaceable optical lenses

- 30°
- 60°
- 90°
- 120°

Installation



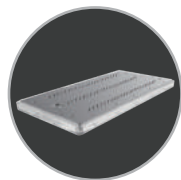
Optional accessories 1
Extension aluminum pole



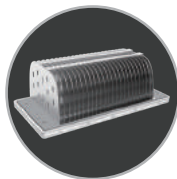
Optional accessories 2
Iron chain



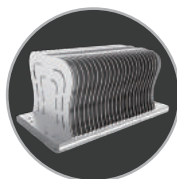
Original Design Heat-Sink



Aluminium Rivet



Aluminium Cooling Fin



Aluminium Cooling Fin



- Ultralight
- Module Adjustable
- High Luminous Flux
- Installation & Maintenance Friendly



145LM/W

Staring up at the ceiling of our own factory inspired us how to create the most efficient, comfortable and safest lighting. Creating the best, inspires and motivates us.

LED Versatile Light T300



CO-T300-50W

6,500LM
2.1kg±5%
72PCS LED
242×102×196.5mm



CO-T300-100W

13,000LM
3.2kg±5%
144PCS LED
242×221×247mm



CO-T300-150W

19,500LM
4.1kg±5%
216PCS LED
242×340×247mm



CO-T300-200W

26,000LM
5.5kg±5%
288PCS LED
419×221×247mm



CO-T300-300W

39,000LM
8.4kg±5%
432PCS LED
419×340×247mm

Specifications

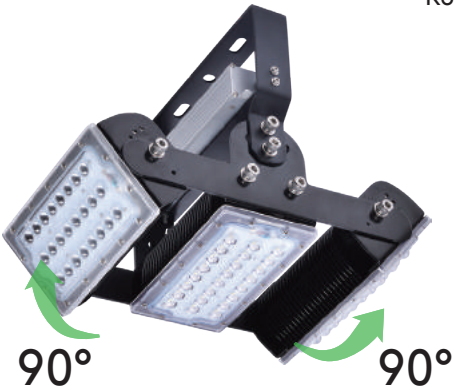
| | |
|--------------------|-----------------------------|
| WATTAGE | 50/100/150/200/300W |
| LIGHT SOURCE | LUMILEDS |
| LED QUANTITY | 72 LEDS EACH MODULE |
| DRIVER | MEANWELL |
| LAMP LUMINOUS FLUX | 130LM/W±5% |
| CRI | Ra>80 |
| CCT | 2700-6500K |
| RATED VOLTAGE | AC 90-305V / DC24V, 50/60Hz |
| POWER FACTOR | >0.95 |
| BEAM ANGLE | X-135°,Y-65°/30°/60°/120° |
| IP GRADE | IP65 |
| HEAT-SINK | ALUMINIUM COOLING FIN |
| OPERATING TEMP | -40℃~60℃ |

Feature



Original 'Multi-LEDs in Cell' Technique

Rotatable Module Design



LED Street Light L300



CO-L300-60W

7,200LM
3.7kg±5%
72PCS LED
81×271×437.5mm



CO-L300-120W

14,400LM
4.9kg±5%
144PCS LED
81×271×547.5mm



CO-L300-180W

21,600LM
5.8kg±5%
216PCS LED
81×271×657.5mm



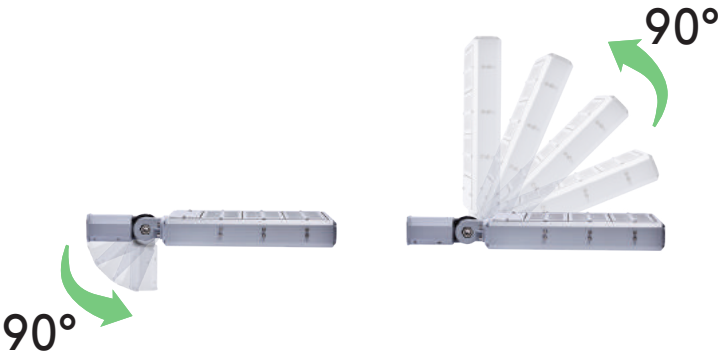
CO-L300-240W

28,800LM
6.8kg±5%
288PCS LED
81×271×767.5mm

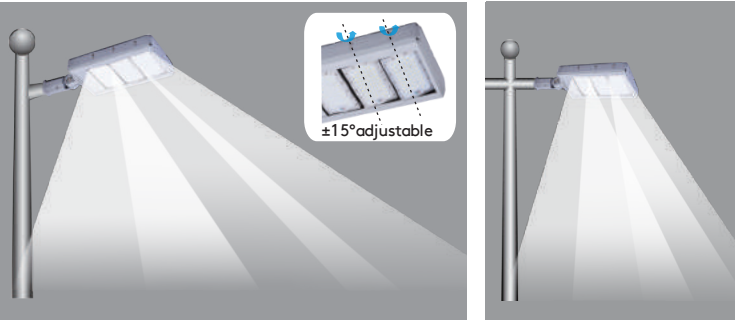
Specifications

| | |
|--------------------|-----------------------------|
| WATTAGE | 60/120/180/240W |
| LIGHT SOURCE | LUMILEDS |
| LED QUANTITY | 72 LEDS EACH MODULE |
| DRIVER | MEANWELL |
| LAMP LUMINOUS FLUX | 120LM/W±5% |
| CRI | Ra>80 |
| CCT | 2700-6500K |
| RATED VOLTAGE | AC 90-305V / DC24V, 50/60Hz |
| POWER FACTOR | >0.95 |
| BEAM ANGLE | X-135°,Y-65° |
| IP GRADE | IP66 |
| HEAT-SINK | ALUMINIUM COOLING FIN |
| OPERATING TEMP | -40℃~60℃ |

Feature



Adjustable high strength bracket to suit various pole types and diameters.



Each module is rotatable allowing easy adjustment to suit different road widths.

LED Street Light L307

LED Down Light D300



CO-L307-30W

3,600LM
1.35kg±5%
40PCS LED
307×124×99mm

CO-L307-40W

4,800LM
1.35kg±5%
40PCS LED
307×124×99mm

CO-D300-30W

3,900LM
1.0kg±5%
48PCS LED
234×146.5×55.3mm

CO-D300-50W

6,500LM
1.3kg±5%
72PCS LED
234×146.5×71mm

CO-D300-100W

14,000LM
1.7kg±5%
168PCS LED
234×146.5×99mm

WATTAGE
LIGHT SOURCE
LED QUANTITY
DRIVER
LAMP LUMINOUS FLUX
CRI
CCT
RATED VOLTAGE
POWER FACTOR
BEAM ANGLE
IP GRADE
HEAT-SINK
OPERATING TEMP

30/40W
LUMILEDS
40 LEDS EACH MODULE
MEANWELL
120LM/W±5%
Ra>80
2700-6500K
AC 90-305V, 50/60Hz
>0.95
X-120°,Y-60°
IP65
ALUMINIUM COOLING FIN
-40℃~60℃

WATTAGE
LIGHT SOURCE
LED QUANTITY
DRIVER
LAMP LUMINOUS FLUX
CRI
CCT
RATED VOLTAGE
POWER FACTOR
BEAM ANGLE
IP GRADE
HEAT-SINK
OPERATING TEMP

30/50/100W
LUMILEDS
48/72/168 LEDS
MEANWELL
130-140LM/W±5%
Ra>80
2700-6500K
AC 90-305V, 50/60Hz
>0.95
X-135°,Y-65°/30°/60°/120°
IP65
ALUMINIUM COOLING FIN
-40℃~60℃



One-step

- Installation
- Adjustment
- Maintenance

New Approach!

Functional engineered mechanical simplicity
for elegant designer applications.

G Track



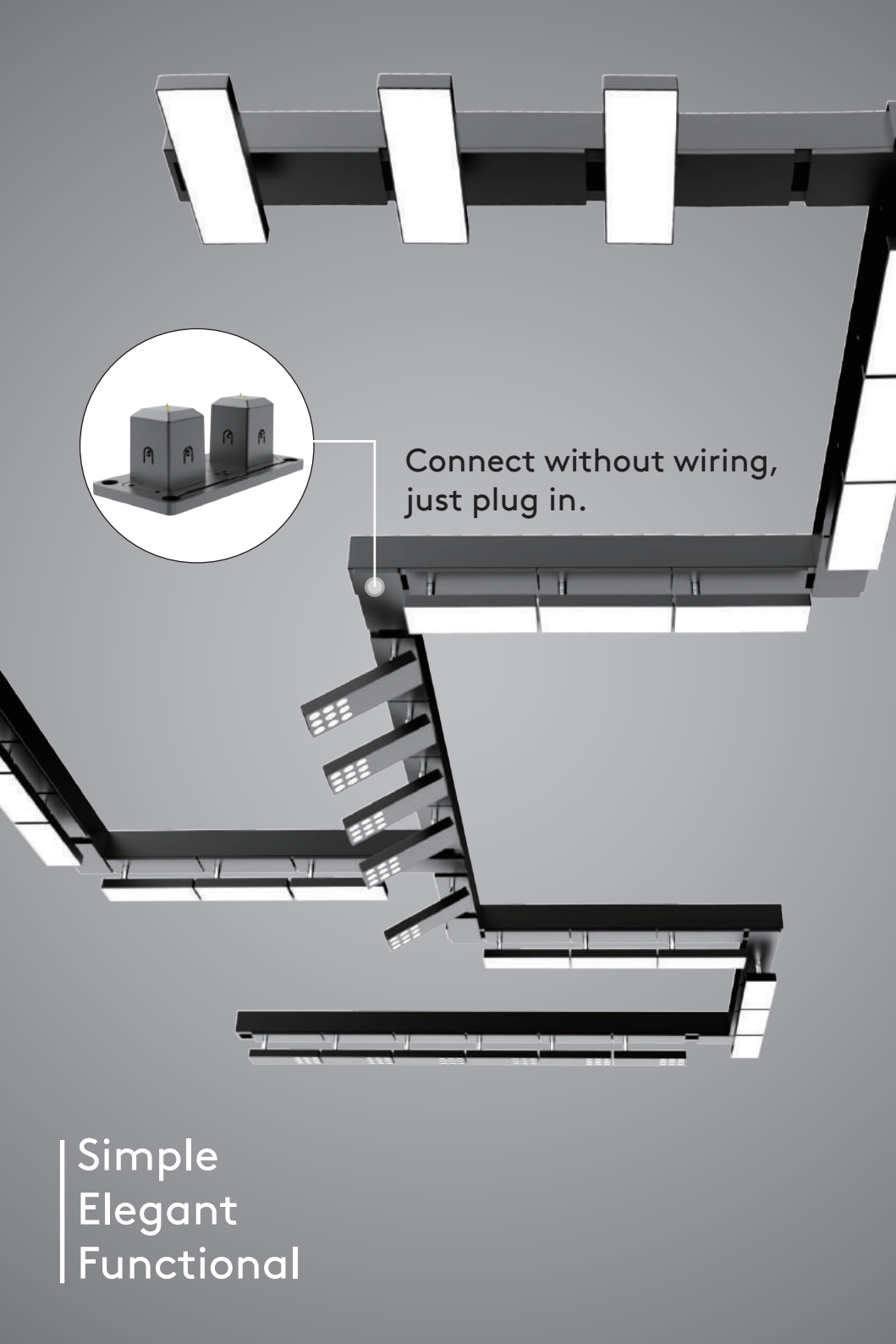
Adjustable Module



360° Horizontally Adjustable



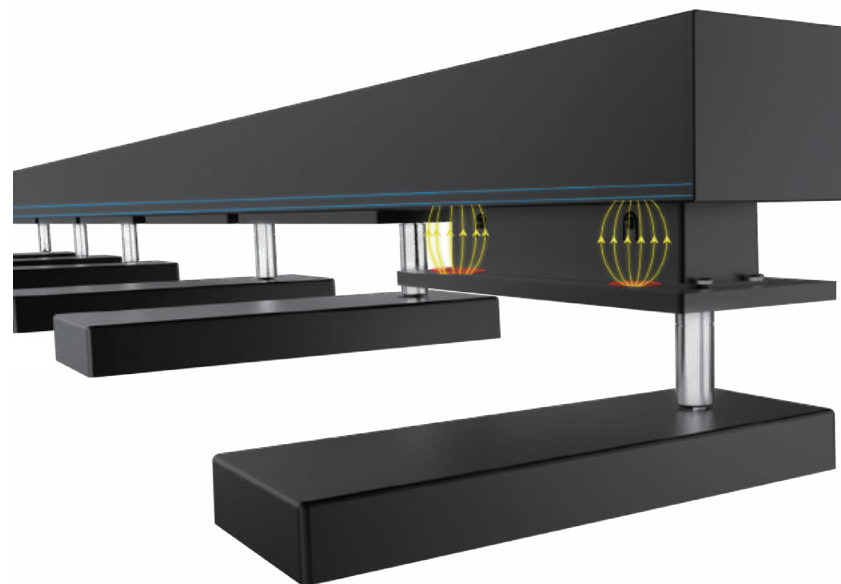
90° Vertically Adjustable



Connect without wiring,
just plug in.

Simple
Elegant
Functional

Magnetic Suction Design



Installation



Pole

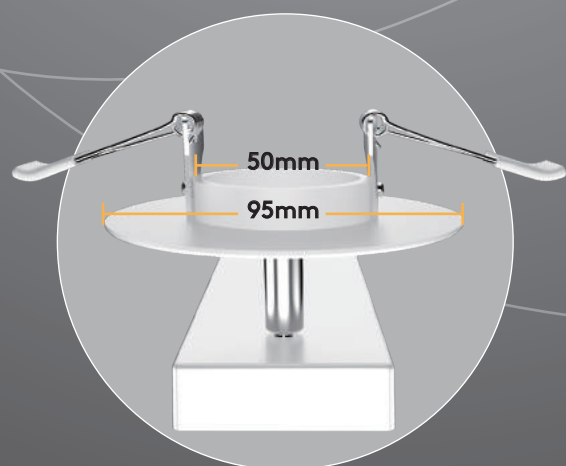
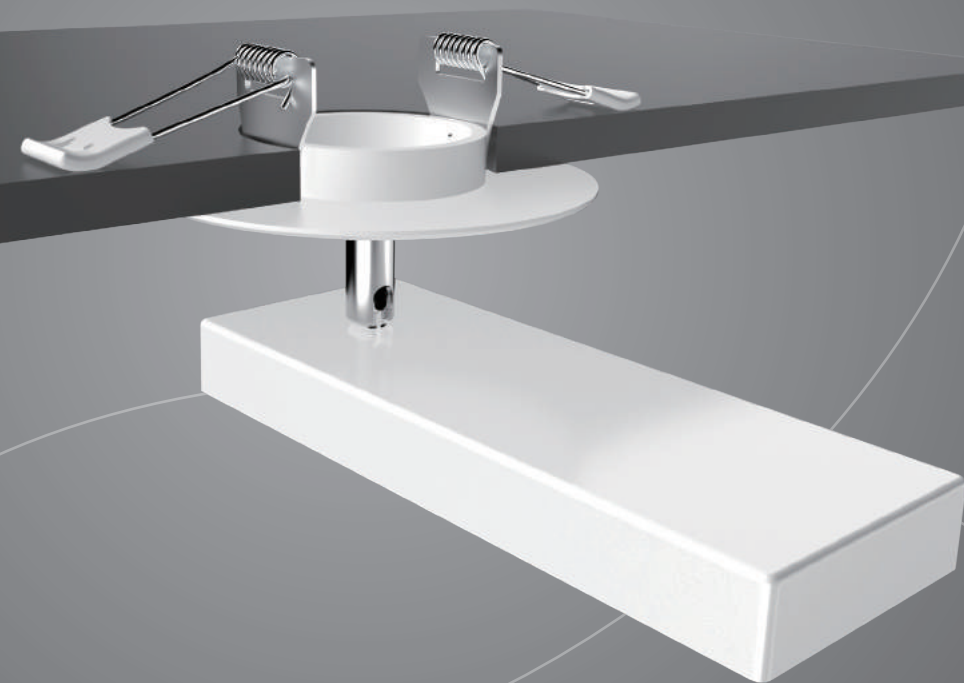


Suspension



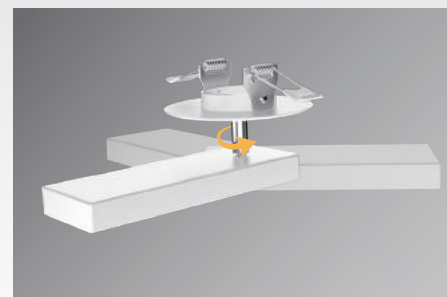
Ceiling

G Track Down Light



Cut-Size

Adjustable Module



360° Horizontally Adjustable



90° Vertically Adjustable



About Company

Since 2011 Shenzhen Coming Technology Co., Ltd have specialised in the design and manufacture of innovative LED lighting products and associated services. In addition to unique and high quality products we also provide professional support for all our products to ensure our customers make the most of our capabilities, including:

Highbay light | Flood light | Street light | Down light | Track light
OEM service | Project solutions | Dialux simulation

We always value comments from our customers. For further information please contact us on info@co-ming.com.



PROJECT SHOW

Factory

Metallurgical
Factory



Warehouse

Port



Warehouse

Industrial
Park



Power Station

Factory



Football ▶
Field



Tennis ▶
Court



Race ▶
Course



Badminton ▶
Court



▲ Retail



▲ Billboard



▲ Street Light



▲ Architecture Lighting



▲ Port



▲ Wall Washer



▲ Parking



▲ Garage



Gas Station ▶

Auto Repair ▼

Railway Station ▶

Airport ▲

Bread Factory ▼



🔗 Check more products application worldwide
www.co-ming.com/project