



PRODUCT OVERVIEW

New VARIO2 Illuminators
New Network & PoE Illuminators

Stay Connected to your Security



Intelligent Network Lighting

A comprehensive range of Infra-Red, White-Light and Hybrid LED Network Illuminators

INFRA-RED

Network & PoE 4

Low Voltage 5-6

Mains Voltage 7

Specialist 8-9, 22
(Panoramic, Platinum, Extreme and D-Zoom Series,
Camera Housing Kits)

Pulsed Lighting 20
(ANPR/LPR Applications)

Hazardous Area Lighting 23

WHITE-LIGHT

Network & PoE 10

Low Voltage 11-12

Mains Voltage 13

Specialist 14, 22
(Panoramic, Extreme and D-Zoom Series,
Camera Housing Kits)

Urban 18-19

Pulsed Lighting 21
(ANPR/LPR Applications)

HYBRID

Network & PoE 15

Low Voltage 16

Mains Voltage 17

ACCESSORIES

All Accessories 24-25



VARIO2 iP i8



VARIO2 iP i6



VARIO2 iP i4



VARIO2 PoE i8



VARIO2 PoE i6



VARIO2 PoE i4



VARIO2 PoE i2

Max Distance	350m (1148ft)	200m (656ft)	144m (472ft)	350m (1148ft)	200m (656ft)	144m (472ft)	62m (203ft)
Angles and Max Distances	10°x10° - 350m (1148ft) 35°x10° - 165m (541ft) 60°x25° - 95m (311ft) 80°x30° - 70m (230ft) 120°x50° - 45m (148ft)	10°x10° - 200m (656ft) 35°x10° - 120m (394ft) 60°x25° - 70m (230ft) 80°x30° - 50m (164ft) 120°x50° - 30m (98ft)	10°x10° - 144m (472ft) 35°x10° - 78m (256ft) 60°x25° - 54m (177ft) 80°x30° - 36m (118ft) 120°x50° - 24m (79ft)	10°x10° - 350m (1148ft) 35°x10° - 165m (541ft) 60°x25° - 95m (311ft) 80°x30° - 70m (230ft) 120°x50° - 45m (148ft)	10°x10° - 200m (656ft) 35°x10° - 120m (394ft) 60°x25° - 70m (230ft) 80°x30° - 50m (164ft) 120°x50° - 30m (98ft)	10°x10° - 144m (472ft) 35°x10° - 78m (256ft) 60°x25° - 54m (177ft) 80°x30° - 36m (118ft) 120°x50° - 24m (79ft)	10°x10° - 62m (203ft) 35°x10° - 42m (138ft) 60°x25° - 26m (85ft) 80°x30° - 18m (59ft) 120°x50° - 14m (46ft)
Input	60W PoE++ or 24V DC	PoE+ IEEE 802.3at or 24V DC	PoE+ IEEE 802.3at or 24V DC	60W PoE++ (24V DC Input available on Premium versions only)	PoE+ IEEE 802.3at (24V DC Input available on Premium versions only)	PoE+ IEEE 802.3at (24V DC Input available on Premium versions only)	PoE IEEE 802.3af (24V DC Input available on Premium versions only)
Beam Shape	Elliptical with HRT (Hot Spot Reduction Technology)	Elliptical with HRT (Hot Spot Reduction Technology)	Elliptical with HRT (Hot Spot Reduction Technology)	Elliptical with HRT (Hot Spot Reduction Technology)	Elliptical with HRT (Hot Spot Reduction Technology)	Elliptical with HRT (Hot Spot Reduction Technology)	Elliptical with HRT (Hot Spot Reduction Technology)
Beam Angle System	VARIO Interchangeable Lens System	VARIO Interchangeable Lens System	VARIO Interchangeable Lens System	VARIO Interchangeable Lens System	VARIO Interchangeable Lens System	VARIO Interchangeable Lens System	VARIO Interchangeable Lens System
Consumption	49W	25W	15W	49W	25W	15W (50W for 940nm variants)	8W
LED type	Platinum Elite SMT LEDs	Platinum Elite SMT LEDs	Platinum Elite SMT LEDs	Platinum Elite SMT LEDs	Platinum Elite SMT LEDs	Platinum Elite SMT LEDs	Platinum Elite SMT LEDs
Number of LEDs	24	12	9	24	12	9 (12 for 940nm variants)	3
Wavelength	850nm (940nm options available)	850nm	850nm (940nm options available)	850nm (940nm options available)	850nm	850nm (940nm options available)	850nm (940nm options available)
IP Rating	IP66	IP66	IP66	IP66	IP66	IP66	IP66
Temperature Range	-50° to +50°C (-58 to 122°F)	-50° to +50°C (-58 to 122°F)	-50° to +50°C (-58 to 122°F)	-50° to +50°C (-58 to 122°F)	-50° to +50°C (-58 to 122°F)	-50° to +50°C (-58 to 122°F)	-50° to +50°C (-58 to 122°F)
Colour	Black	Black	Black	Black	Black	Black	Black
Weight	1.65kg (3.6lbs)	950g (2.1lbs)	950g (2.1lbs)	1.65kg (3.6lbs)	950g (2.1lbs)	950g (2.1lbs)	600g (1.3lbs)
Dimensions	135 x 180 x 68.2mm 5" x 7" x 2.6" approx	100 x 135 x 66mm 4" x 5" x 2.5" approx	100 x 135 x 66mm 4" x 5" x 2.5" approx	135 x 180 x 68.2mm 5" x 7" x 2.6" approx	100 x 135 x 66mm 4" x 5" x 2.5" approx	100 x 135 x 66mm 4" x 5" x 2.5" approx	75 x 100 x 64mm 3" x 4" x 2.5" approx
Additional Features	VARIO IP Web Interface Power Control, Boost, Deterrent in basic user settings Control individual lights or groups Standard kit includes 10°x10°, 35°x10° and 60°x25° angles Timer, optional soft start, selectable input / output, advanced set-up and diagnostics	VARIO IP Web Interface Power Control, Boost, Deterrent in basic user settings Control individual lights or groups Standard kit includes 10°x10°, 35°x10° and 60°x25° angles Timer, optional soft start, selectable input / output, advanced set-up and diagnostics	VARIO IP Web Interface Power Control, Boost, Deterrent in basic user settings Control individual lights or groups Standard kit includes 10°x10°, 35°x10° and 60°x25° angles Timer, optional soft start, selectable input / output, advanced set-up and diagnostics	LED status indicator, Photocell Advanced security settings Manual programming inputs Standard kit includes 10°x10°, 35°x10° and 60°x25° angles Photocell following output and Telemetry control available - Premium versions only	LED status indicator, Photocell Advanced security settings Manual programming inputs Standard kit includes 10°x10°, 35°x10° and 60°x25° angles Photocell following output and Telemetry control available - Premium versions only	LED status indicator, Photocell Advanced security settings Manual programming inputs Standard kit includes 10°x10°, 35°x10° and 60°x25° angles Photocell following output and Telemetry control available - Premium versions only	LED status indicator, Photocell Advanced security settings Manual programming inputs Standard kit includes 10°x10°, 35°x10° and 60°x25° angles Photocell following output and Telemetry control available - Premium versions only
Perfect Partner	A range of Integrations available. VARIO PSU*	A range of Integrations available. VARIO PSU*	A range of Integrations available. VARIO PSU*	Optional VARIO Remote control*	Optional VARIO Remote control*	Optional VARIO Remote control*	Optional VARIO Remote control*

* Please see Accessories on Pages 24-25



VARIO2 i16-1



VARIO2 i8-1



VARIO2 i6-1



VARIO2 i4-1



VARIO2 i2-1

Max Distance	500m (1640ft)	350m (1148ft)	200m (656ft)	144m (472ft)	78m (256ft)
Angles and Max Distances	10°x10° - 500m (1640ft) 35°x10° - 250m (820ft) 60°x25° - 135m (443ft) 80°x30° - 105m (344ft) 120°x50° - 65m (213ft)	10°x10° - 350m (1148ft) 35°x10° - 165m (541ft) 60°x25° - 95m (311ft) 80°x30° - 70m (230ft) 120°x50° - 45m (148ft)	10°x10° - 200m (656ft) 35°x10° - 120m (394ft) 60°x25° - 70m (230ft) 80°x30° - 50m (164ft) 120°x50° - 30m (98ft)	10°x10° - 144m (472ft) 35°x10° - 78m (256ft) 60°x25° - 54m (177ft) 80°x30° - 36m (118ft) 120°x50° - 24m (79ft)	10°x10° - 78m (256ft) 35°x10° - 54m (177ft) 60°x25° - 36m (118ft) 80°x30° - 24m (79ft) 120°x50° - 18m (59ft)
Input	24V AC/DC	12-24V AC/DC	12-24V AC/DC	12-24V AC/DC	12-24V AC/DC
Beam Shape	Elliptical with HRT (Hot Spot Reduction Technology)	Elliptical with HRT (Hot Spot Reduction Technology)	Elliptical with HRT (Hot Spot Reduction Technology)	Elliptical with HRT (Hot Spot Reduction Technology)	Elliptical with HRT (Hot Spot Reduction Technology)
Beam Angle System	VARIO Interchangeable Lens System	VARIO Interchangeable Lens System	VARIO Interchangeable Lens System	VARIO Interchangeable Lens System	VARIO Interchangeable Lens System
Consumption	100W	46W	25W	13W (25W for 940nm variants)	10W
LED type	Platinum Elite SMT LEDs	Platinum Elite SMT LEDs	Platinum Elite SMT LEDs	Platinum Elite SMT LEDs	Platinum Elite SMT LEDs
Number of LEDs	48	24	12	9 (12 for 940nm variants)	6
Wavelength	850nm (940nm options available)	850nm (940nm options available)	850nm	850nm (940nm options available)	850nm (940nm options available)
IP Rating	IP66	IP66	IP66	IP66	IP66
Temperature Range	-50° to +50°C (-58 to 122°F)	-50° to +50°C (-58 to 122°F)	-50° to +50°C (-58 to 122°F)	-50° to +50°C (-58 to 122°F)	-50° to +50°C (-58 to 122°F)
Colour	Black	Black	Black	Black	Black
Weight	3.1kg (6.8lbs)	1.65kg (3.6lbs)	950g (2.1lbs)	950g (2.1lbs)	600g (1.3lbs)
Dimensions	180 x 277 x 75mm 7" x 11" x 2.9" approx	135 x 180 x 68.2mm 5" x 7" x 2.6" approx	100 x 135 x 66mm 4" x 5" x 2.5" approx	100 x 135 x 66mm 4" x 5" x 2.5" approx	75 x 100 x 64mm 3" x 4" x 2.5" approx
Additional Features	LED status indicator Photocell, Photocell following output Telemetry input Advanced security settings Manual programming inputs Standard kit includes 10°x10°, 35°x10° and 60°x25° angles	LED status indicator Photocell, Photocell following output Telemetry input Advanced security settings Manual programming inputs Standard kit includes 10°x10°, 35°x10° and 60°x25° angles	LED status indicator Photocell, Photocell following output Telemetry input Advanced security settings Manual programming inputs Standard kit includes 10°x10°, 35°x10° and 60°x25° angles	LED status indicator Photocell, Photocell following output Telemetry input Advanced security settings Manual programming inputs Standard kit includes 10°x10°, 35°x10° and 60°x25° angles	LED status indicator Photocell, Photocell following output Telemetry input Advanced security settings Manual programming inputs Standard kit includes 10°x10°, 35°x10° and 60°x25° angles
Perfect Partner	Optional VARIO Remote control* VARIO PSU*	Optional VARIO Remote control* VARIO PSU*	Optional VARIO Remote control* VARIO PSU*	Optional VARIO Remote control* VARIO PSU*	Optional VARIO Remote control* VARIO PSU*



VARIO2 i8-3



VARIO2 i6-3



VARIO2 i4-3



VARIO2 i8-2



VARIO2 i6-2



VARIO2 i4-2



VARIO2 i2-2

Max Distance	606m (1988ft)	346m (1135ft)	260m (853ft)	500m (1640ft)	282m (925ft)	220m (722ft)	120m (394ft)
Angles and Max Distances	10°x10° - 606m (1988ft) 35°x10° - 285m (935ft) 60°x25° - 164m (538ft) 80°x30° - 121m (397ft) 120°x50° - 80m (262ft)	10°x10° - 346m (1135ft) 35°x10° - 208m (682ft) 60°x25° - 121m (397ft) 80°x30° - 87m (285ft) 120°x50° - 52m (171ft)	10°x10° - 260m (853ft) 35°x10° - 145m (476ft) 60°x25° - 93m (305ft) 80°x30° - 62m (203ft) 120°x50° - 42m (138ft)	10°x10° - 500m (1640ft) 35°x10° - 240m (787ft) 60°x25° - 135m (443ft) 80°x30° - 100m (328ft) 120°x50° - 65m (213ft)	10°x10° - 282m (925ft) 35°x10° - 169m (554ft) 60°x25° - 99m (325ft) 80°x30° - 71m (233ft) 120°x50° - 42m (138ft)	10°x10° - 220m (722ft) 35°x10° - 120m (394ft) 60°x25° - 76m (249ft) 80°x30° - 51m (167ft) 120°x50° - 34m (112ft)	10°x10° - 120m (394ft) 35°x10° - 78m (256ft) 60°x25° - 54m (177ft) 80°x30° - 36m (118ft) 120°x50° - 26m (85ft)
Input	12-24V AC/DC	12-24V AC/DC	12-24V AC/DC	12-24V AC/DC	12-24V AC/DC	12-24V AC/DC	12-24V AC/DC
Beam Shape	Elliptical with HRT (Hot Spot Reduction Technology)	Elliptical with HRT (Hot Spot Reduction Technology)	Elliptical with HRT (Hot Spot Reduction Technology)	Elliptical with HRT (Hot Spot Reduction Technology)	Elliptical with HRT (Hot Spot Reduction Technology)	Elliptical with HRT (Hot Spot Reduction Technology)	Elliptical with HRT (Hot Spot Reduction Technology)
Beam Angle System	VARIO Interchangeable Lens System	VARIO Interchangeable Lens System	VARIO Interchangeable Lens System	VARIO Interchangeable Lens System	VARIO Interchangeable Lens System	VARIO Interchangeable Lens System	VARIO Interchangeable Lens System
Consumption	138W	75W	39W (75W for 940nm variants)	92W	50W	26W (50W for 940nm variants)	20W
LED type	Platinum Elite SMT LEDs	Platinum Elite SMT LEDs	Platinum Elite SMT LEDs	Platinum Elite SMT LEDs	Platinum Elite SMT LEDs	Platinum Elite SMT LEDs	Platinum Elite SMT LEDs
Number of LEDs	72	36	27 (36 for 940nm variants)	48	24	18 (24 for 940nm variants)	12
Wavelength	850nm (940nm options available)	850nm	850nm (940nm options available)	850nm (940nm options available)	850nm	850nm (940nm options available)	850nm (940nm options available)
IP Rating	IP66	IP66	IP66	IP66	IP66	IP66	IP66
Temperature Range	-50° to +50°C (-58 to 122°F)	-50° to +50°C (-58 to 122°F)	-50° to +50°C (-58 to 122°F)	-50° to +50°C (-58 to 122°F)	-50° to +50°C (-58 to 122°F)	-50° to +50°C (-58 to 122°F)	-50° to +50°C (-58 to 122°F)
Colour	Black	Black	Black	Black	Black	Black	Black
Weight	6kg (13.2lbs)	3.75kg (8.3lbs)	3.75kg (8.3lbs)	4.5kg (9.9lbs)	2.25kg (5lbs)	2.25kg (5lbs)	1.5kg (3.3lbs)
Dimensions	423 x 226 x 68mm 17" x 9" x 3" approx	318 x 182 x 67mm 12.5" x 7" x 3" approx	318 x 182 x 67mm 12.5" x 7" x 3" approx	279 x 223 x 68mm 11" x 9" x 3" approx	209 x 178 x 67mm 8" x 7" x 3" approx	209 x 178 x 67mm 8" x 7" x 3" approx	159 x 144 x 63mm 6" x 5" x 2.5" approx
Additional Features	LED status indicator Photocell, Photocell following output Telemetry input Advanced security settings Manual programming inputs Standard kit includes 10°x10°, 35°x10° and 60°x25° angles	LED status indicator Photocell, Photocell following output Telemetry input Advanced security settings Manual programming inputs Standard kit includes 10°x10°, 35°x10° and 60°x25° angles	LED status indicator Photocell, Photocell following output Telemetry input Advanced security settings Manual programming inputs Standard kit includes 10°x10°, 35°x10° and 60°x25° angles	LED status indicator Photocell, Photocell following output Telemetry input Advanced security settings Manual programming inputs Standard kit includes 10°x10°, 35°x10° and 60°x25° angles	LED status indicator Photocell, Photocell following output Telemetry input Advanced security settings Manual programming inputs Standard kit includes 10°x10°, 35°x10° and 60°x25° angles	LED status indicator Photocell, Photocell following output Telemetry input Advanced security settings Manual programming inputs Standard kit includes 10°x10°, 35°x10° and 60°x25° angles	LED status indicator Photocell, Photocell following output Telemetry input Advanced security settings Manual programming inputs Standard kit includes 10°x10°, 35°x10° and 60°x25° angles
Perfect Partner	Optional VARIO Remote control* VARIO PSU*	Optional VARIO Remote control* VARIO PSU*	Optional VARIO Remote control* VARIO PSU*	Optional VARIO Remote control* VARIO PSU*	Optional VARIO Remote control* VARIO PSU*	Optional VARIO Remote control* VARIO PSU*	Optional VARIO Remote control* VARIO PSU*

MAINS VOLTAGE



rayMAX 300



rayMAX 200



rayMAX 150



rayMAX 100



rayMAX 50



rayMAX 25

Max Distance	370m (1,214ft)	300m (985ft)	183m (600ft)	150m (492ft)	75m (246ft)	35m (115ft)
Angles and Max Distances	10°-30° - 370m (1,214ft) 30°-90° - 200m (656ft)	10°-20° - 300m (985ft) 30°-60° - 160m (525ft) 50°-100° - 112m (367ft) 120°-180° - 64m (210ft)	10°-30° - 183m (600ft) 30°-90° - 100m (328ft) 50°-180° - 70m (230ft)	10°-20° - 150m (492ft) 30°-60° - 80m (262ft) 50°-100° - 56m (184ft) 120°-180° - 32m (105ft)	10°-20° - 75m (246ft) 30°-60° - 40m (131ft) 50°-100° - 28m (92ft) 120°-180° - 16m (52ft)	10° - 35m (115ft) 30° - 20m (66ft) 50° - 14m (46ft) 120° - 8m (26ft)
Input	Universal 100-230V AC - comes with PSU (See details below)	Universal 100-230V AC - comes with PSU (See details below)	Universal 100-230V AC - comes with PSU (See details below)	Universal 100-230V AC - comes with PSU (See details below)	Universal 100-230V AC - comes with PSU (See details below)	Universal 100-230V AC - comes with PSU (See details below)
Beam Shape	Circular	Circular	Circular	Circular	Circular	Circular
Beam Angle System	Ultimate Adaptive Illumination™	Adaptive Illumination™	Ultimate Adaptive Illumination™	Adaptive Illumination™	Adaptive Illumination™	Fixed
Consumption	120W	80W	75W	50W	20W	10W
LED type	SMT LEDs	SMT LEDs	SMT LEDs	SMT LEDs	SMT LEDs	SMT LEDs
Number of LEDs	594	396	324	198	90	45
Wavelength	850nm (940nm options available)	850nm (940nm options available)	850nm (940nm options available)	850nm (940nm options available)	850nm (940nm options available)	850nm (940nm options available)
IP Rating	IP66	IP66	IP66	IP66	IP66	IP66
Temperature Range	-50° to +50°C (-58 to 122°F)	-50° to +50°C (-58 to 122°F)	-50° to +50°C (-58 to 122°F)	-50° to +50°C (-58 to 122°F)	-50° to +50°C (-58 to 122°F)	-50° to +50°C (-58 to 122°F)
Colour	Black	Black	Black	Black	Black	Black
Weight	6kg (13.2lbs)	4kg (8.8lbs)	3.75kg (8.3lbs)	2.25kg (5.5 lbs)	1.7kg (3.7lbs)	0.5kg (1.1lbs)
Dimensions	420 x 195 x 66mm 16" x 8" x 3" approx	280 x 195 x 66mm 11" x 8" x 3" approx	315 x 135 x 55mm 12" x 5" x 2" approx	210 x 150 x 65mm 8" x 6" x 3" approx	160 x 115 x 54mm 6" x 4" x 2" approx	75 x 100 x 54mm 3" x 4" x 2" approx
Additional Features	Power Adjust Telemetry Control Adjustable Photocell	Power Adjust Telemetry Control Adjustable Photocell	Power Adjust Telemetry Control Adjustable Photocell	Power Adjust Telemetry Control Adjustable Photocell	Power Adjust Telemetry Control Adjustable Photocell	Power Adjust Telemetry Control Adjustable Photocell
Perfect Partner	See Accessories Section*	See Accessories Section*	See Accessories Section*	See Accessories Section*	See Accessories Section*	See Accessories Section*

External Power Supply (included)

Input	Universal 100-230V AC auto-sensing	Universal 100-230V AC auto-sensing	Universal 100-230V AC auto-sensing	Universal 100-230V AC auto-sensing	Universal 100-230V AC auto-sensing	Universal 100-230V AC auto-sensing
Output	120W	80W	75W	50W	20W	10W
Weights	2.4kg (5.3lbs)	1.8kg (4lbs)	2.4kg (5.3lbs)	1.5kg (3.3lbs)	0.9kg (2lbs)	0.9kg (2lbs)
Dimensions	240 x 160 x 81mm 9" x 6" x 3" approx	160 x 160 x 90mm 6" x 6" x 4" approx	240 x 160 x 81mm 9" x 6" x 3" approx	160 x 160 x 90mm 6" x 6" x 4" approx	160 x 120 x 80mm 6" x 5" x 3" approx	160 x 120 x 80mm 6" x 5" x 3" approx

* Please see Accessories on Pages 21-22



rayMAX 300
PANORAMIC ULTRA



rayMAX 150
PANORAMIC ULTRA



rayMAX 300
PLATINUM[®]



rayMAX 200
PLATINUM[®]



rayMAX 100
PLATINUM[®]

Max Distance	260m (853ft)	170m (558ft)	1000m (3,280ft) - with 2 units	300m (985ft)	150m (492ft)
Angles and Max Distances	60 x 5° - 260m (853ft) 180 x 5° - 150m (492ft)	60 x 5° - 170m (558ft) 180 x 5° - 100m (328ft)	5°-15° - 700m (2,297ft) 10°-30° - 370m (1,214ft) 30°-90° - 250m (820ft) 50°-180° - 175m (575ft)	10°-20° - 300m (985ft) 30°-60° - 220m (722ft) 50°-100° - 140m (459ft) 120°-180° - 70m (230ft)	10°-20° - 150m (492ft) 30°-60° - 130m (427ft) 50°-100° - 90m (295ft) 120°-180° - 50m (164ft)
Input	Universal 100-230V AC - comes with PSU (See details below)	Universal 100-230V AC - comes with PSU (See details below)	Universal 100-230V AC - comes with PSU (See details below)	Universal 100-230V AC - comes with PSU (See details below)	Universal 100-230V AC - comes with PSU (See details below)
Beam Shape	Elliptical with HRT (Hot Spot Reduction Technology)	Elliptical with HRT (Hot Spot Reduction Technology)	Circular	Circular	Circular
Beam Angle System	Ultimate Adaptive Illumination™	Ultimate Adaptive Illumination™	Ultimate Adaptive Illumination™	Adaptive Illumination™	Adaptive Illumination™
Consumption	165W	105W	165W	100W	70W
LED type	Platinum Elite SMT LEDs	Platinum Elite SMT LEDs	Platinum SMT LEDs	Platinum SMT LEDs	Platinum SMT LEDs
Number of LEDs	72	48	72	48	32
Wavelength	850nm	850nm	850nm (940nm options available)	850nm (940nm options available)	850nm (940nm options available)
IP Rating	IP66	IP66	IP66	IP66	IP66
Temperature Range	-50° to +50°C (-58 to 122°F)	-50° to +50°C (-58 to 122°F)	-50° to +50°C (-58 to 122°F)	-50° to +50°C (-58 to 122°F)	-50° to +50°C (-58 to 122°F)
Colour	Black	Black	Black	Black	Black
Weight	6kg (13.2lbs)	3.75kg (8.3lbs)	6kg (13.2lbs)	4kg (8.8lbs)	2.5kg (5.5lbs)
Dimensions	420 x 195 x 66mm 16" x 8" x 3" approx	315 x 135 x 55mm 12" x 5" x 2" approx	420 x 195 x 66mm 16" x 8" x 3" approx	280 x 195 x 66mm 11" x 8" x 3" approx	210 x 150 x 65mm 8" x 6" x 3" approx
Additional Features	Power Adjust Telemetry Control Adjustable Photocell	Power Adjust Telemetry Control Adjustable Photocell	Power Adjust Telemetry Control Adjustable Photocell	Power Adjust Telemetry Control Adjustable Photocell	Power Adjust Telemetry Control Adjustable Photocell
Perfect Partner	See Accessories Section*	See Accessories Section*	See Accessories Section*	See Accessories Section*	See Accessories Section*

External Power Supply (included)

Input	Universal 100-230V AC auto-sensing	Universal 100-230V AC auto-sensing	Universal 100-230V AC auto-sensing	Universal 100-230V AC auto-sensing	Universal 100-230V AC auto-sensing
Output	165W	105W	165W	100W	70W
Weights	2.4kg (5.3lbs)	2.4kg (5.3lbs)	2.4kg (5.3lbs)	1.8kg (4lbs)	1.8kg (4lbs)
Dimensions	240 x 160 x 81mm 9" x 6" x 3" approx	240 x 160 x 81mm 9" x 6" x 3" approx	240 x 160 x 81mm 9" x 6" x 3" approx	160 x 160 x 90mm 6" x 6" x 4" approx	160 x 160 x 90mm 6" x 6" x 4" approx

* Please see Accessories on Pages 24-25



VARIO2 EXTREME i16



VARIO2 EXTREME i8



VARIO D-ZOOM i8



VARIO ESP

Max Distance	500m (1640ft)	350m (1148ft)	120m (394ft)	120m (394ft)
Angles and Max Distances	10°x10° - 500m (1640ft) 35°x10° - 250m (820ft) 60°x25° - 135m (443ft) 80°x30° - 105m (344ft) 120°x50° - 65m (213ft)	10°x10° - 350m (1148ft) 35°x10° - 165m (541ft) 60°x25° - 95m (311ft) 80°x30° - 70m (230ft) 120°x50° - 45m (148ft)	10° - 80° 10° - 120m (394ft) 80° - 30m (98ft)	10°x10° - 120m (394ft) (2 lights) 35°x10° - 65m (213ft) (2 lights) 60°x25° - 45m (148ft) (2 lights) 80°x30° - 30m (98ft) (2 lights) 120°x50° - 20m (66ft) (2 lights)
Input	24V AC or DC	24V AC or DC	12-24V AC/DC	12-24V AC/DC
Beam Shape	Elliptical with HRT (Hot spot Reduction Technology)	Elliptical with HRT (Hot spot Reduction Technology)	Elliptical with HRT (Hot Spot Reduction Technology)	Elliptical with HRT (Hot Spot Reduction Technology)
Beam Angle System	VARIO Interchangeable Lens System	VARIO Interchangeable Lens System	VARIO Zoom System	VARIO interchangeable lens system
Consumption	100W	46W	48W	12W each
LED type	Platinum Elite SMT LEDs	Platinum Elite SMT LEDs	Platinum SMT LEDs	Platinum SMT LEDs - WL
Number of LEDs	48	24	24	6 (each light)
Wavelength	850nm (940nm options available)	850nm (940nm options available)	850nm (940nm options available)	850nm (940nm options available)
Environmental Rating	IP67, NEMA 6, IK09, Extreme Salinity, Extreme Humidity, Extreme Vibration	IP67, NEMA 6, IK09, Extreme Salinity, Extreme Humidity, Extreme Vibration	IP66	IP66
Temperature Range	-50° to +75°C (-58° to 167°F)	-50° to +75°C (-58° to 167°F)	-50° to +50°C (-58° to 122°F)	-50° to +50°C (-58° to 122°F)
Colour	Black	Black	Black	Black
Weight	3.1kg (6.8lbs)	1.65kg (3.6lbs)	1.65kg (3.6lbs)	600g (1.3lbs) each
Dimensions	180 x 277 x 75mm (7" x 11" x 2.9" approx.)	135 x 180 x 68.2mm (5" x 7" x 2.6" approx.)	135 x 180 x 68.2mm 5" x 7" x 3.2" approx	75 x 100 x 64mm 3" x 4" x 2.5" approx
Additional Features	LED status indicator Photocell Photocell following output Telemetry input Advanced Security Settings Manual Programming Inputs Standard kit includes 10°x10°, 35°x10° and 60°x25° angles	LED status indicator Photocell Photocell following output Telemetry input Advanced Security Settings Manual Programming Inputs Standard kit includes 10°x10°, 35°x10° and 60°x25° angles	LED status indicator Photocell Photocell following output Zoom control by Telemetry input	LED status indicator Photocell Photocell following output Standard kit includes 10°x10°, 35°x10° and 60°x25° angles
Perfect Partner	Optional VARIO Remote control* VARIO PSU*	Optional VARIO Remote control* VARIO PSU*	Optional VARIO Remote control* VARIO PSU*	Optional VARIO Remote control*



VARIO2^{iP} w8



VARIO2^{iP} w4



VARIO2^{PoE} w8



VARIO2^{PoE} w4



VARIO2^{PoE} w2

Max Distance	180m (591ft)	110m (361ft)	180m (591ft)	110m (361ft)	42m (138ft)
Angles and Max Distances	10°x10° - 180m (591ft) 35°x10° - 95m (312ft) 60°x25° - 50m (164ft) 80°x30° - 35m (115ft) 120°x50° - 25m (82ft)	10°x10° - 110m (361ft) 35°x10° - 65m (213ft) 60°x25° - 35m (115ft) 80°x30° - 25m (82ft) 120°x50° - 18m (59ft)	10°x10° - 180m (591ft) 35°x10° - 95m (312ft) 60°x25° - 50m (164ft) 80°x30° - 35m (115ft) 120°x50° - 25m (82ft)	10°x10° - 110m (361ft) 35°x10° - 65m (213ft) 60°x25° - 35m (115ft) 80°x30° - 25m (82ft) 120°x50° - 18m (59ft)	10°x10° - 42m (138ft) 35°x10° - 28m (92ft) 60°x25° - 18m (59ft) 80°x30° - 14m (46ft) 120°x50° - 8m (26ft)
Input	60W PoE ++ or 24V DC	PoE + IEEE 802.3at or 24V DC	60W PoE ++ (24V DC Input available on Premium versions only)	PoE + IEEE 802.3at (24V DC Input available on Premium versions only)	PoE IEEE 802.3af (24V DC Input available on Premium versions only)
Beam Shape	Elliptical with HRT (Hot Spot Reduction Technology)	Elliptical with HRT (Hot Spot Reduction Technology)	Elliptical with HRT (Hot Spot Reduction Technology)	Elliptical with HRT (Hot Spot Reduction Technology)	Elliptical with HRT (Hot Spot Reduction Technology)
Beam Angle System	VARIO Interchangeable Lens System	VARIO Interchangeable Lens System	VARIO Interchangeable Lens System	VARIO Interchangeable Lens System	VARIO Interchangeable Lens System
Consumption	47W	25W	47W	25W	9W
LED type	Platinum Elite SMT LEDs	Platinum Elite SMT LEDs	Platinum Elite SMT LEDs	Platinum Elite SMT LEDs	Platinum Elite SMT LEDs
Number of LEDs	24	12	24	12	3
Power Output (luminous flux)	3727lm	1863lm	3727lm	1863lm	466lm
Wavelength	White-Light	White-Light	White-Light	White-Light	White-Light
IP Rating	IP66	IP66	IP66	IP66	IP66
Temperature Range	-50° to +50°C (-58 to 122°F)	-50° to +50°C (-58 to 122°F)	-50° to +50°C (-58 to 122°F)	-50° to +50°C (-58 to 122°F)	-50° to +50°C (-58 to 122°F)
Colour Temperature	6000K~	6000K~	6000K~	6000K~	6000K~
Colour Reproduction Index	>70	>70	>70	>70	>70
Colour	Silver	Silver	Silver	Silver	Silver
Weight	1.65kg (3.6lbs)	950g (2.1lbs)	1.65kg (3.6lbs)	950g (2.1lbs)	600g (1.3lbs)
Dimensions	135 x 180 x 68.2mm 5" x 7" x 2.6" approx	100 x 135 x 66mm 4" x 5" x 2.5" approx	135 x 180 x 68.2mm 5" x 7" x 2.6" approx	100 x 135 x 66mm 4" x 5" x 2.5" approx	75 x 100 x 64mm 3" x 4" x 2.5" approx
Additional Features	VARIO IP Web Interface. Power Control, Boost, Deterrent in basic user settings. Control individual lights or groups. Standard kit includes 10°x10°, 35°x10° and 60°x25° angles. Timer, optional soft start, selectable input / output, advanced set-up and diagnostics	VARIO IP Web Interface. Power Control, Boost, Deterrent in basic user settings. Control individual lights or groups. Standard kit includes 10°x10°, 35°x10° and 60°x25° angles. Timer, optional soft start, selectable input / output, advanced set-up and diagnostics	LED status indicator Photocell Advanced security settings Manual programming inputs Standard kit includes 10°x10°, 35°x10° and 60°x25° angles Photocell following output and Telemetry control available - Premium versions only	LED status indicator Photocell Advanced security settings Manual programming inputs Standard kit includes 10°x10°, 35°x10° and 60°x25° angles Photocell following output and Telemetry control available - Premium versions only	LED status indicator Photocell Advanced security settings Manual programming inputs Standard kit includes 10°x10°, 35°x10° and 60°x25° angles Photocell following output and Telemetry control available - Premium versions only
Perfect Partner	A range of Integrations available. VARIO PSU*	A range of Integrations available. VARIO PSU*	Optional VARIO Remote control*	Optional VARIO Remote control*	Optional VARIO Remote control*

* Please see Accessories on Pages 24-25



VARIO2 w16-1



VARIO2 w8-1



VARIO2 w4-1



VARIO2 w2-1

Max Distance	250m (820ft)	180m (591ft)	110m (361ft)	60m (197ft)
Angles and Max Distances	10°x10° - 250m (820ft) 35°x10° - 125m (410ft) 60°x25° - 70m (230ft) 80°x30° - 48m (157ft) 120°x50° - 35m (115ft)	10°x10° - 180m (591ft) 35°x10° - 95m (312ft) 60°x25° - 50m (164ft) 80°x30° - 35m (115ft) 120°x50° - 25m (82ft)	10°x10° - 110m (361ft) 35°x10° - 65m (213ft) 60°x25° - 35m (115ft) 80°x30° - 25m (82ft) 120°x50° - 18m (59ft)	10°x10° - 60m (197ft) 35°x10° - 40m (131ft) 60°x25° - 25m (82ft) 80°x30° - 20m (66ft) 120°x50° - 12m (39ft)
Input	24V AC/DC	12-24V AC/DC	12-24V AC/DC	12-24V AC/DC
Beam Shape	Elliptical with HRT (Hot Spot Reduction Technology)	Elliptical with HRT (Hot Spot Reduction Technology)	Elliptical with HRT (Hot Spot Reduction Technology)	Elliptical with HRT (Hot Spot Reduction Technology)
Beam Angle System	VARIO Interchangeable Lens System	VARIO Interchangeable Lens System	VARIO Interchangeable Lens System	VARIO Interchangeable Lens System
Consumption	84W	42W	24W	11W
LED type	Platinum Elite SMT LEDs	Platinum Elite SMT LEDs	Platinum Elite SMT LEDs	Platinum Elite SMT LEDs
Number of LEDs	48	24	12	6
Power Output (luminous flux)	7453lm	3727lm	1863lm	932lm
Wavelength	White-Light	White-Light	White-Light	White-Light
IP Rating	IP66	IP66	IP66	IP66
Temperature Range	-50° to +50°C (-58 to 122°F)	-50° to +50°C (-58 to 122°F)	-50° to +50°C (-58 to 122°F)	-50° to +50°C (-58 to 122°F)
Colour Temperature	6000K ~	6000K ~	6000K ~	6000K ~
Colour Reproduction Index	>70	>70	>70	>70
Colour	Silver	Silver	Silver	Silver
Weight	3.1kg (6.8lbs)	1.65kg (3.6lbs)	950g (2.1lbs)	600g (1.3lbs)
Dimensions	180 x 277 x 75mm 7" x 11" x 2.9" approx	135 x 180 x 68.2mm 5" x 7" x 2.6" approx	100 x 135 x 66mm 4" x 5" x 2.5" approx	75 x 100 x 64mm 3" x 4" x 2.5" approx
Additional Features	LED status indicator Photocell, Photocell following output Telemetry input Advanced security settings Manual programming inputs Standard kit includes 10°x10°, 35°x10° and 60°x25° angles	LED status indicator Photocell, Photocell following output Telemetry input Advanced security settings Manual programming inputs Standard kit includes 10°x10°, 35°x10° and 60°x25° angles	LED status indicator Photocell, Photocell following output Telemetry input Advanced security settings Manual programming inputs Standard kit includes 10°x10°, 35°x10° and 60°x25° angles	LED status indicator Photocell, Photocell following output Telemetry input Advanced security settings Manual programming inputs Standard kit includes 10°x10°, 35°x10° and 60°x25° angles
Perfect Partner	Optional VARIO Remote control* VARIO PSU*	Optional VARIO Remote control* VARIO PSU*	Optional VARIO Remote control* VARIO PSU*	Optional VARIO Remote control* VARIO PSU*



VARIO2 w8-3



VARIO2 w4-3



VARIO2 w8-2



VARIO2 w4-2



VARIO2 w2-2

Max Distance	311m (1020ft)	190m (623ft)	254m (833ft)	155m (509ft)	90m (295ft)
Angles and Max Distances**	10°x10° - 311m (1020ft) 35°x10° - 164m (538ft) 60°x25° - 87m (285ft) 80°x30° - 61m (200ft) 120°x50° - 43m (141ft)	10°x10° - 190m (623ft) 35°x10° - 112m (367ft) 60°x25° - 61m (200ft) 80°x30° - 43m (141ft) 120°x50° - 31m (102ft)	10°x10° - 254m (833ft) 35°x10° - 134m (440ft) 60°x25° - 71m (233ft) 80°x30° - 49m (161ft) 120°x50° - 35m (115ft)	10°x10° - 155m (509ft) 35°x10° - 92m (302ft) 60°x25° - 49m (161ft) 80°x30° - 35m (115ft) 120°x50° - 25m (82ft)	10°x10° - 90m (295ft) 35°x10° - 56m (184ft) 60°x25° - 35m (115ft) 80°x30° - 28m (92ft) 120°x50° - 17m (56ft)
Input	12-24V AC/DC	12-24V AC/DC	12-24V AC/DC	12-24V AC/DC	12-24V AC/DC
Beam Shape	Elliptical with HRT (Hot Spot Reduction Technology)	Elliptical with HRT (Hot Spot Reduction Technology)	Elliptical with HRT (Hot Spot Reduction Technology)	Elliptical with HRT (Hot Spot Reduction Technology)	Elliptical with HRT (Hot Spot Reduction Technology)
Beam Angle System	VARIO Interchangeable Lens System	VARIO Interchangeable Lens System	VARIO Interchangeable Lens System	VARIO Interchangeable Lens System	VARIO Interchangeable Lens System
Consumption	126W	72W	84W	48W	22W
LED type	Platinum Elite SMT LEDs	Platinum Elite SMT LEDs	Platinum Elite SMT LEDs	Platinum Elite SMT LEDs	Platinum Elite SMT LEDs
Number of LEDs	72	36	48	24	12
Power Output (luminous flux)	11181lm	5589lm	7454lm	3726lm	1864lm
Wavelength	White-Light	White-Light	White-Light	White-Light	White-Light
IP Rating	IP66	IP66	IP66	IP66	IP66
Temperature Range	-50° to +50°C (-58 to 122°F)	-50° to +50°C (-58 to 122°F)	-50° to +50°C (-58 to 122°F)	-50° to +50°C (-58 to 122°F)	-50° to +50°C (-58 to 122°F)
Colour Temperature	6000K ~	6000K ~	6000K ~	6000K ~	6000K ~
Colour Reproduction Index	>70	>70	>70	>70	>70
Colour	Silver	Silver	Silver	Silver	Silver
Weight	6kg (13.2lbs)	3.75kg (8.3lbs)	4.5kg (9.9lbs)	2.25kg (5lbs)	1.5kg (3.3lbs)
Dimensions	423 x 226 x 68mm 17" x 9" x 3" approx	318 x 182 x 67mm 12.5" x 7" x 3" approx	279 x 223 x 68mm 11" x 9" x 3" approx	209 x 178 x 67mm 8" x 7" x 3" approx	159 x 144 x 63mm 6" x 5" x 2.5" approx
Additional Features	LED status indicator Photocell, Photocell following output Telemetry input Advanced security settings Manual programming inputs Standard kit includes 10°x10°, 35°x10° and 60°x25° angles	LED status indicator Photocell, Photocell following output Telemetry input Advanced security settings Manual programming inputs Standard kit includes 10°x10°, 35°x10° and 60°x25° angles	LED status indicator Photocell, Photocell following output Telemetry input Advanced security settings Manual programming inputs Standard kit includes 10°x10°, 35°x10° and 60°x25° angles	LED status indicator Photocell, Photocell following output Telemetry input Advanced security settings Manual programming inputs Standard kit includes 10°x10°, 35°x10° and 60°x25° angles	LED status indicator Photocell, Photocell following output Telemetry input Advanced security settings Manual programming inputs Standard kit includes 10°x10°, 35°x10° and 60°x25° angles
Perfect Partner	Optional VARIO Remote control* VARIO PSU*	Optional VARIO Remote control* VARIO PSU*	Optional VARIO Remote control* VARIO PSU*	Optional VARIO Remote control* VARIO PSU*	Optional VARIO Remote control* VARIO PSU*

* Please see Accessories on Pages 24-25

** Distances for surveillance purposes only - NOT for general area illumination



rayLUX 300



rayLUX 200



rayLUX 150



rayLUX 100



rayLUX 50



rayLUX 25

Max Distance	320m (1,049ft)	200m (656ft)	150m (492ft)	120m (394ft)	60m (197ft)	35m (115ft)
Angles and Max Distances**	5°-15° - 320m (1,049ft) 10°-30° - 240m (787ft) 30°-90° - 130m (427ft) 50°-180° - 90m (295ft)	10°-20° - 200m (656ft) 30°-60° - 105m (344ft) 50°-100° - 80m (262ft) 120°-180° - 30m (98ft)	10°-30° - 150m (492ft) 30°-90° - 80m (262ft) 50°-180° - 55m (180ft)	10°-20° - 120m (394ft) 30°-60° - 65m (213ft) 50°-100° - 45m (148ft) 120°-180° - 18m (59ft)	10°-20° - 60m (197ft) 30°-60° - 40m (131ft) 50°-100° - 28m (92ft) 120°-180° - 12m (39ft)	10° - 35m (115ft) 30° - 20m (66ft) 50° - 14m (46ft) 120° - 8m (26ft)
Input	Universal 100-230V AC - comes with PSU (See details below)	Universal 100-230V AC - comes with PSU (See details below)	Universal 100-230V AC - comes with PSU (See details below)	Universal 100-230V AC - comes with PSU (See details below)	Universal 100-230V AC - comes with PSU (See details below)	Universal 100-230V AC - comes with PSU (See details below)
Beam Shape	Circular	Circular	Circular	Circular	Circular	Circular
Beam Angle System	Ultimate Adaptive Illumination™	Adaptive Illumination™	Ultimate Adaptive Illumination™	Adaptive Illumination™	Adaptive Illumination™	Fixed
Consumption	120W	80W	75W	50W	25W	15W
LED type	Platinum SMT LEDs	Platinum SMT LEDs	Platinum SMT LEDs	Platinum SMT LEDs	Platinum SMT LEDs	Platinum SMT LEDs
Number of LEDs	72	48	48	32	16	8
Power Output (luminous flux)	6273lm	4250lm	4182lm	2788lm	1600lm	800lm
Wavelength	White Light	White Light	White Light	White Light	White Light	White Light
IP Rating	IP66	IP66	IP66	IP66	IP66	IP66
Temperature Range	-50° to +50°C (-58 to 122°F)	-50° to +50°C (-58 to 122°F)	-50° to +50°C (-58 to 122°F)	-50° to +50°C (-58 to 122°F)	-50° to +50°C (-58 to 122°F)	-50° to +50°C (-58 to 122°F)
Colour Temperature	5800k	5800k	5800k	5800k	5800k	5800k
Colour	Silver	Silver	Silver	Silver	Silver	Silver
Weight	6kg (13.2lbs)	4kg (8.8lbs)	3.75kg (8.3lbs)	2.5kg (5.5lbs)	1.7kg (3.7lbs)	0.5kg (1.1lbs)
Dimensions	420 x 195 x 66mm 16" x 8" x 3" approx	280 x 195 x 66mm 11" x 8" x 3" approx	315 x 135 x 55mm 12" x 5" x 2" approx	210 x 150 x 65mm 8" x 6" x 3" approx	160 x 115 x 54mm 6" x 4" x 2" approx	75 x 100 x 54mm 3" x 4" x 2" approx
Additional Features	Power Adjust Telemetry Control Adjustable Photocell	Power Adjust Telemetry Control Adjustable Photocell	Power Adjust Telemetry Control Adjustable Photocell	Power Adjust Telemetry Control Adjustable Photocell	Power Adjust Telemetry Control Adjustable Photocell	Power Adjust Telemetry Control Adjustable Photocell
Perfect Partner	See Accessories Section*	See Accessories Section*	See Accessories Section*	See Accessories Section*	See Accessories Section*	See Accessories Section*

External Power Supply (included)

Input	Universal 100-230V AC auto-sensing	Universal 100-230V AC auto-sensing	Universal 100-230V AC auto-sensing	Universal 100-230V AC auto-sensing	Universal 100-230V AC auto-sensing	Universal 100-230V AC auto-sensing
Output	120W	80W	75W	50W	25W	15W
Weights	2.4kg (5.3lbs)	1.8kg (4lbs)	2.4kg (5.3lbs)	1.5kg (3.3lbs)	0.9kg (2lbs)	0.9kg (2lbs)
Dimensions	240mm x 160mm x 81mm 9" x 6" x 3" approx	160 x 160 x 90mm 6" x 6" x 4" approx	240 x 160 x 81mm 9" x 6" x 3" approx	160 x 160 x 90mm 6" x 6" x 4" approx	160 x 120 x 80mm 6" x 5" x 3" approx	160 x 120 x 80mm 6" x 5" x 3" approx



rayLUX 300
PANORAMIC



rayLUX 150
PANORAMIC



VARIO2 EXTREME w16



VARIO2 EXTREME w8



VARIO D-ZOOM w8

Max Distance	83m (272ft)	68m (41ft)	250m (820ft)	180m (591ft)	120m (394ft)
Angles and Max Distances	60-180x25° - 83m (272ft) 180° - 51m (167ft) 60° - 83m (272ft)	60-180x25° - 68m (223ft) 180° - 41m (135ft) 60° - 68m (223ft)	10°x10° - 250m (820ft) 35°x10° - 125m (410ft) 60°x25° - 70m (230ft) 80°x30° - 48m (157ft) 120°x50° - 35m (115ft)	10°x10° - 180m (591ft) 35°x10° - 95m (312ft) 60°x25° - 50m (164ft) 80°x30° - 35m (115ft) 120°x50° - 25m (82ft)	10° - 80° 10° - 120m (394ft) 80° - 30m (98ft)
Input	Universal 100-230V AC - comes with PSU (See details below)	Universal 100-230V AC - comes with PSU (See details below)	24V AC or DC	24V AC or DC	12-24V AC/DC
Beam Shape	Elliptical with HRT (Hot Spot Reduction Technology)	Elliptical with HRT (Hot Spot Reduction Technology)	Elliptical with HRT (Hot spot Reduction Technology)	Elliptical with HRT (Hot spot Reduction Technology)	Elliptical with HRT (Hot Spot Reduction Technology)
Beam Angle System	Ultimate Adaptive Illumination™	Ultimate Adaptive Illumination™	VARIO Interchangeable Lens System	VARIO Interchangeable Lens System	VARIO Zoom System
Consumption	120W	75W	84W	42W	48W
LED type	Platinum SMT LEDs	Platinum SMT LEDs	Platinum Elite SMT LEDs	Platinum Elite SMT LEDs	Platinum SMT LEDs
Number of LEDs	72	48	48	24	24
WL Power Output (luminous flux)	7770lm	5178lm	7453lm	3727lm	N/A
Wavelength	White Light	White Light	White-Light	White-Light	850nm (940nm options available)
Environmental Rating	IP66	IP66	IP67, NEMA 6, IK09, Extreme Salinity, Extreme Humidity, Extreme Vibration	IP67, NEMA 6, IK09, Extreme Salinity, Extreme Humidity, Extreme Vibration	IP66
Temperature Range	-50° to +50°C (-58 to 122°F)	-50° to +50°C (-58 to 122°F)	-50° to +75°C (-58° to 167°F)	-50° to +75°C (-58° to 167°F)	-50° to +50°C (-58° to 122°F)
Colour Temperature	5700k	5700k	6000K~	6000K~	N/A
Colour Reproduction Index	N/A	N/A	> 70	> 70	N/A
Colour	Silver	Silver	Silver	Silver	Black
Weight	6kg (13.2lbs)	3.75kg (8.3lbs)	3.1kg (6.8lbs)	1.65kg (3.6lbs)	1.65kg (3.6lbs)
Dimensions	420 x 195 x 66mm 16" x 8" x 3" approx	315 x 135 x 55mm 12" x 5" x 2" approx	180 x 277 x 75mm 7" x 11" x 2.9" approx	135 x 180 x 68.2mm 5" x 7" x 2.6" approx	135 x 180 x 68.2mm 5" x 7" x 3.2" approx
Additional Features	Power Adjust Telemetry Control Adjustable Photocell	Power Adjust Telemetry Control Adjustable Photocell	LED status indicator Photocell Photocell following output Telemetry input Advanced Security Settings Manual Programming Inputs Standard kit includes 10°x10°, 35°x10° and 60°x25° angles	LED status indicator Photocell Photocell following output Telemetry input Advanced Security Settings Manual Programming Inputs Standard kit includes 10°x10°, 35°x10° and 60°x25° angles	LED status indicator Photocell Photocell following output
Perfect Partner	See Accessories Section*	See Accessories Section*	Optional VARIO Remote control* VARIO PSU*	Optional VARIO Remote control* VARIO PSU*	Optional VARIO Remote control* VARIO PSU*

External Power Supply (included)

Input	Universal 100-230V AC auto-sensing	Universal 100-230V AC auto-sensing			
Output	120W	75W			
Weights	2.4kg (5.3lbs)	2.4kg (5.3lbs)			
Dimensions	240 x 160 x 81mm 9" x 6" x 3" approx	240 x 160 x 81mm 9" x 6" x 3" approx			



VARIO2 iP HYBRID 8



VARIO2 iP HYBRID 6



VARIO2 iP HYBRID 4

Max Distance	290m (951ft)	180m (591ft)	130m (427ft)
Angles and Max Distances	10°x10° - 290m (951ft) IR and 144m (472ft) WL 35°x10° - 150m (492ft) IR and 76m (249ft) WL 60°x25° - 86m (282ft) IR and 40m (131ft) WL 80°x30° - 63m (207ft) IR and 30m (98ft) WL 120°x50° - 41m (135ft) IR and 20m (66ft) WL	10°x10° - 180m (591ft) IR and 88m (289ft) WL 35°x10° - 108m (354ft) IR and 52m (171ft) WL 60°x25° - 63m (207ft) IR and 28m (92ft) WL 80°x30° - 45m (148ft) IR and 20m (66ft) WL 120°x50° - 27m (89ft) IR and 14m (46ft) WL	10°x10° - 130m (427ft) IR and 70m (230ft) WL 35°x10° - 70m (230ft) IR and 42m (138ft) WL 60°x25° - 49m (161ft) IR and 22m (72ft) WL 80°x30° - 32m (105ft) IR and 16m (52ft) WL 120°x50° - 22m (72ft) IR and 12m (39ft) WL
Input	60W PoE ++ or 24V DC	PoE+ IEEE 802.3at or 24V DC	PoE+ IEEE 802.3at or 24V DC
Beam Shape	Elliptical with HRT (Hot spot Reduction Technology)	Elliptical with HRT (Hot spot Reduction Technology)	Elliptical with HRT (Hot spot Reduction Technology)
Beam Angle System	VARIO Interchangeable Lens System	VARIO Interchangeable Lens System	VARIO Interchangeable Lens System
Consumption	43W	22W	15W
LED type	Platinum Elite twin-core SMT LEDs	Platinum Elite twin-core SMT LEDs	Platinum Elite SMT LEDs
Number of LEDs	12 x Infra-Red, 12 x White-Light	6 x Infra-Red, 6 x White-Light	6 x Infra-Red, 3 x White-Light
WL Power output (luminous flux)	2981lm	1490lm	745lm
Wavelength	850nm and White-Light (940nm options available)	850nm and White-Light	850nm and White-Light (940nm options available)
IP Rating	IP66	IP66	IP66
Temperature Range	-50 to +50°C (-58 to 122°F)	-50 to +50°C (-58 to 122°F)	-50 to +50°C (-58 to 122°F)
Colour Temperature (White-Light)	6000K~	6000K~	6000K~
Colour Reproduction Index (White-Light)	>70	>70	>70
Colour	Black	Black	Black
Weight	1.65kg (3.6lbs)	950g (2.1lbs)	950g (2.1lbs)
Dimensions	135 x 180 x 68.2mm (5 x 7 x 2.6" approx)	100 x 135 x 66mm (4" x 5" x 2.5" approx.)	100 x 135 x 66mm (4" x 5" x 2.5" approx.)
Additional Features	VARIO IP Web Interface. Power Control, Deterrent in basic user settings. Control individual lights or groups. Individual control for IR & WL Standard kit includes 10°x10°, 35°x10° and 60°x25° angles. Timer, optional soft start, selectable input / output, advanced set-up and diagnostics	VARIO IP Web Interface. Power Control, Deterrent in basic user settings. Control individual lights or groups. Individual control for IR & WL Standard kit includes 10°x10°, 35°x10° and 60°x25° angles. Timer, optional soft start, selectable input / output, advanced set-up and diagnostics	VARIO IP Web Interface. Power Control, Deterrent in basic user settings. Control individual lights or groups. Individual control for IR & WL Standard kit includes 10°x10°, 35°x10° and 60°x25° angles. Timer, optional soft start, selectable input / output, advanced set-up and diagnostics
Perfect Partner	A range of Integrations available VARIO PSU*	A range of Integrations available VARIO PSU*	A range of Integrations available VARIO PSU*



Vario2 HYBRID 16



Vario2 HYBRID 8



Vario2 HYBRID 6



Vario2 HYBRID 4

Max Distance	450m (1476ft)	290m (951ft)	180m (591ft)	130m (427ft)
Angles and Max Distances	10°x10° - 450m (1476ft) IR and 195m (640ft) WL 35°x10° - 225m (738ft) IR and 95m (312ft) WL 60°x25° - 122m (400ft) IR and 55m (180ft) WL 80°x30° - 95m (312ft) IR and 38m (125ft) WL 120°x50° - 59m (194ft) IR and 28m (92ft) WL	10°x10° - 290m (951ft) IR and 144m (472ft) WL 35°x10° - 150m (492ft) IR and 76m (249ft) WL 60°x25° - 86m (282ft) IR and 40m (131ft) WL 80°x30° - 63m (207ft) IR and 30m (98ft) WL 120°x50° - 41m (135ft) IR and 20m (66ft) WL	10°x10° - 180m (591ft) IR and 88m (289ft) WL 35°x10° - 108m (354ft) IR and 52m (171ft) WL 60°x25° - 63m (207ft) IR and 28m (92ft) WL 80°x30° - 45m (148ft) IR and 20m (66ft) WL 120°x50° - 27m (89ft) IR and 14m (46ft) WL	10°x10° - 130m (427ft) IR and 70m (230ft) WL 35°x10° - 70m (230ft) IR and 42m (138ft) WL 60°x25° - 49m (161ft) IR and 22m (72ft) WL 80°x30° - 32m (105ft) IR and 16m (52ft) WL 120°x50° - 22m (72ft) IR and 12m (39ft) WL
Input	24V DC	24V DC	24V DC	24V DC
Beam Shape	Elliptical with HRT (Hot spot Reduction Technology)	Elliptical with HRT (Hot spot Reduction Technology)	Elliptical with HRT (Hot spot Reduction Technology)	Elliptical with HRT (Hot spot Reduction Technology)
Beam Angle System	VARIO Interchangeable Lens System	VARIO Interchangeable Lens System	VARIO Interchangeable Lens System	VARIO Interchangeable Lens System
Consumption	78W	40W	21W	13W
LED type	Platinum Elite twin-core SMT LEDs	Platinum Elite twin-core SMT LEDs	Platinum Elite twin-core SMT LEDs	Platinum Elite SMT LEDs
Number of LEDs	24 x Infra-Red, 24 x White-Light	12 x Infra-Red, 12 x White-Light	6 x Infra-Red, 6 x White-Light	6 x Infra-Red, 3 x White-Light
WL Power output (luminous flux)	5692lm	2981lm	1490lm	745lm
Wavelength	850nm and White-Light (940nm options available)	850nm and White-Light (940nm options available)	850nm and White-Light	850nm and White-Light (940nm options available)
IP Rating	IP66	IP66	IP66	IP66
Temperature Range	-50 to +50°C (-58 to 122°F)	-50° to +50°C (-58 to 122°F)	-50 to +50°C (-58 to 122°F)	-50 to +50°C (-58 to 122°F)
Colour Temperature (White-Light)	6000K~	6000K~	6000K~	6000K~
Colour Reproduction Index (White-Light)	>70	>70	>70	>70
Colour	Black	Black	Black	Black
Weight	3.1kg (6.8lbs)	1.65kg (3.6lbs)	950g (2.1lbs)	950g (2.1lbs)
Dimensions	180 x 277 x 75mm (7" x 11" x 2.9" approx)	135 x 180 x 68.2mm (5 x 7 x 2.6" approx)	100 x 135 x 66mm (4" x 5" x 2.5" approx.)	100 x 135 x 66mm (4" x 5" x 2.5" approx.)
Additional Features	LED status indicator Photocell Photocell following output Telemetry input to trigger WL Standard kit includes 10°x10°, 35°x10° and 60°x25° angles	LED status indicator Photocell Photocell following output Telemetry input to trigger WL Standard kit includes 10°x10°, 35°x10° and 60°x25° angles	LED status indicator Photocell Photocell following output Telemetry input to trigger WL Standard kit includes 10°x10°, 35°x10° and 60°x25° angles	LED status indicator Photocell Photocell following output Telemetry input to trigger WL Standard kit includes 10°x10°, 35°x10° and 60°x25° angles
Perfect Partner	Optional VARIO Remote control* VARIO PSU*	Optional VARIO Remote control* VARIO PSU*	Optional VARIO Remote control* VARIO PSU*	Optional VARIO Remote control* VARIO PSU*



HYBRID 200



HYBRID 150



HYBRID 100

Max Distance	112m (367ft)	80m (262ft)	55m (180ft)
Angles and Max Distances	30° (112m/367ft IR and 70m/230ft WL) 50° (80m/262ft IR and 50m/164ft WL) angles from 10° to 120° available	30° (80m/262ft IR and 40m/131ft WL) 50° (56m/184ft IR and 30m/98ft WL) angles from 10° to 120° available	30° (55m/180ft IR and 40m/131ft WL) 50° (40m/131ft IR and 30m/98ft WL) angles from 10° to 120° available
Input	Universal 100-230V AC - comes with PSU (See details below)	Universal 100-230V AC - comes with PSU (See details below)	Universal 100-230V AC - comes with PSU (See details below)
Beam Shape	Circular	Circular	Circular
Beam Angle System	Fixed	Adaptive Illumination™ - IR / Fixed - WL	Fixed
Consumption	80W	75W	50W
LED type	Platinum SMT LEDs - WL	Platinum SMT LEDs - WL	Platinum SMT LEDs - WL
Number of LEDs	24 - WL / 188 - IR	16 - WL / 216 - IR	16 - WL / 108 - IR
WL Power output (luminous flux)	2125lm	1394lm	1394lm
Wavelength	850nm & White Light	850nm & White Light	850nm & White Light
IP Rating	IP66	IP66	IP66
Temperature Range	-50° to +50°C (-58 to 122°F)	-50° to +50°C (-58 to 122°F)	-50° to +50°C (-58 to 122°F)
Colour Temperature (White-Light)	5800k	5800k	5800k
Colour Reproduction Index (White-Light)			
Colour	Black and Silver	Black and Silver	Black and Silver
Weight	4kg (8.8lbs)	3.75kg (8.3lbs)	2.5kg (5.5lbs)
Dimensions	280 x 195 x 66mm (11" x 8" x 3" approx)	315 x 135 x 55mm (12" x 5" x 2" approx)	210 x 150 x 65mm (8" x 6" x 3" approx)
Additional Features	Power Adjust Telemetry Control Adjustable Photocell Independent control of IR & WL	Power Adjust Telemetry Control Adjustable Photocell Independent control of IR & WL	Power Adjust Telemetry Control Adjustable Photocell Independent control of IR & WL
Perfect Partner	See Accessories Section*	See Accessories Section*	See Accessories Section*

External Power Supply (included)

Input	Universal 100-230V AC auto-sensing	Universal 100-230V AC auto-sensing	Universal 100-230V AC auto-sensing
Output	120W	120W	120W
Weights	2.4kg (5.3lbs)	2.4kg (5.3lbs)	2.4kg (5.3lbs)
Dimensions	240 x 160 x 81mm (9" x 6" x 3" approx)	240 x 160 x 81mm (9" x 6" x 3" approx)	240 x 160 x 81mm (9" x 6" x 3" approx)



URBAN-X MINI 20



URBAN-X MINI 30



URBAN-X MINI 40

Input	220-240V AC	220-240V AC	220-240V AC
Beam Angle Options	Perimeter/Pathway (two options) General Area Other options available	Perimeter/Pathway (two options) General Area Other options available	Perimeter/Pathway (two options) General Area Other options available
Beam Angle System	Fixed	Fixed	Fixed
Consumption	20W	30W	40W
LED type	Platinum SMT LEDs	Platinum SMT LEDs	Platinum SMT LEDs
Number of LEDs	4	4	4
Power Output (Lumens)	2,200	3,300	4,400
Wavelength	White-Light	White-Light	White-Light
IP Rating	IP66	IP66	IP66
Temperature Range	-30 to +60°C (-22 to 140°F)	-30 to +60°C (-22 to 140°F)	-30 to +60°C (-22 to 140°F)
Colour Temperature	4000K Other options available	4000K Other options available	4000K Other options available
Colour	Silver RAL9006 Other options available	Silver RAL9006 Other options available	Silver RAL9006 Other options available
Weight	2Kg (4.4lbs)	2Kg (4.4lbs)	2Kg (4.4lbs)
Dimensions	160 x 444 x 58.5mm (6.5" x 17.5" x 2.5")	160 x 444 x 58.5mm (6.5" x 17.5" x 2.5")	160 x 444 x 58.5mm (6.5" x 17.5" x 2.5")
Additional Features	5 LED Driver Programs available plus Custom (user specified) Control Options: Integrated Photocell DALI 1 Piece lightweight design for easy installation	5 LED Driver Programs available plus Custom (user specified) Control Options: Integrated Photocell DALI 1 Piece lightweight design for easy installation	5 LED Driver Programs available plus Custom (user specified) Control Options: Integrated Photocell DALI 1 Piece lightweight design for easy installation
Accessories	Wall Mount Bracket Pole Mount Bracket	Wall Mount Bracket Pole Mount Bracket	Wall Mount Bracket Pole Mount Bracket



URBAN-X PRO 40



URBAN-X PRO 60



URBAN-X PRO 80



URBAN-X PRO 100

Input	220-240V AC	220-240V AC	220-240V AC	220-240V AC
Beam Angle Options	Perimeter/Pathway (two options) General Area Other options available	Perimeter/Pathway (two options) General Area Other options available	Perimeter/Pathway (two options) General Area Other options available	Perimeter/Pathway (two options) General Area Other options available
Beam Angle System	Fixed	Fixed	Fixed	Fixed
Consumption	40W	60W	80W	100W
LED type	Platinum SMT LEDs	Platinum SMT LEDs	Platinum SMT LEDs	Platinum SMT LEDs
Number of LEDs	24	24	36	36
Power Output (Lumens)	5,600	8,400	11,200	14,000
Wavelength	White-Light	White-Light	White-Light	White-Light
IP Rating	IP66	IP66	IP66	IP66
Temperature Range	30°C to +40°C (-22°F to 104°F) -30°C to +60°C (-22°F to 140°F) with reduced performance (50% light output)	30°C to +40°C (-22°F to 104°F) -30°C to +60°C (-22°F to 140°F) with reduced performance (50% light output)	30°C to +40°C (-22°F to 104°F) -30°C to +60°C (-22°F to 140°F) with reduced performance (50% light output)	30°C to +40°C (-22°F to 104°F) -30°C to +60°C (-22°F to 140°F) with reduced performance (50% light output)
Colour Temperature	4000K Other options available	4000K Other options available	4000K Other options available	4000K Other options available
Colour	Silver RAL9006 Other options available	Silver RAL9006 Other options available	Silver RAL9006 Other options available	Silver RAL9006 Other options available
Weight	4Kg (8.8lbs)	4Kg (8.8lbs)	4Kg (8.8lbs)	4Kg (8.8lbs)
Dimensions	485 x 239 x 220mm (19.1"x 9.4"x 8.7")	485 x 239 x 220mm (19.1"x 9.4"x 8.7")	485 x 239 x 220mm (19.1"x 9.4"x 8.7")	485 x 239 x 220mm (19.1"x 9.4"x 8.7")
Additional Features	5 LED driver programs available plus custom (user specified) Control options: Integrated photocell DALI 2 piece lightweight design for easy installation	5 LED driver programs available plus custom (user specified) Control options: Integrated photocell DALI 2 piece lightweight design for easy installation	5 LED driver programs available plus custom (user specified) Control options: Integrated photocell DALI 2 piece lightweight design for easy installation	5 LED driver programs available plus custom (user specified) Control options: Integrated photocell DALI 2 piece lightweight design for easy installation
Accessories	Wall Mount Bracket	Wall Mount Bracket	Wall Mount Bracket	Wall Mount Bracket

ANPR/LPR APPLICATIONS



PULSESTAR i24



PULSESTAR i32



PULSESTAR i48



PULSESTAR i72



PULSESTAR i96

Lighting Drive Power (pulsed) *	220W	295W	440W	660W	880W
Angles & Typical Distances*	10°x10° - 25-30m (82-98ft) 20°x10° - 15-17m (50-55ft) 35°x10° - 13-15m (43-50ft) Other angles available	10°x10° - 30m-35m (98-115ft) 20°x10° - 17-20m (55-65ft) 35°x10° - 15-17m (50-55ft) Other angles available	10°x10° - 35-42m (115-138ft) 20°x10° - 21-24m (69-79ft) 35°x10° - 18-21m (59-69ft) Other angles available	10°x10° - 43m-50m (141-164ft) 20°x10° - 26-29m (85-95ft) 35°x10° - 22-26m (72-85ft) Other angles available	10°x10° - 50m-60m (164-197ft) 20°x10° - 30-34m (98-112ft) 35°x10° - 26-30m (85-98ft) Other angles available
Input	Universal 100-230V AC - comes with PSU (see details below) (24V DC options available - contact Raytec)	Universal 100-230V AC - comes with PSU (see details below) (24V DC options available - contact Raytec)	Universal 100-230V AC - comes with PSU (see details below) (24V DC options available - contact Raytec)	Universal 100-230V AC - comes with PSU (see details below) (24V DC options available - contact Raytec)	Universal 100-230V AC - comes with PSU (see details below) (24V DC options available - contact Raytec)
Beam Shape	Elliptical with HRT (Hot Spot Reduction Technology)	Elliptical with HRT (Hot Spot Reduction Technology)	Elliptical with HRT (Hot Spot Reduction Technology)	Elliptical with HRT (Hot Spot Reduction Technology)	Elliptical with HRT (Hot Spot Reduction Technology)
Beam Angle System	VARIO Interchangeable Lens System	VARIO Interchangeable Lens System	VARIO Interchangeable Lens System	VARIO Interchangeable Lens System	VARIO Interchangeable Lens System
Consumption	22W	30W	44W	66W	88W
LED type	Platinum Elite twin-core SMT LEDs	Platinum Elite twin-core SMT LEDs	Platinum Elite twin-core SMT LEDs	Platinum Elite twin-core SMT LEDs	Platinum Elite twin-core SMT LEDs
Number of LEDs	24	32	48	72	96
Typical Pulse Width	2 ms	2 ms	2 ms	2 ms	2 ms
Trigger Input	TTL - 3.3 - 24V DC	TTL - 3.3 - 24V DC	TTL - 3.3 - 24V DC	TTL - 3.3 - 24V DC	TTL - 3.3 - 24V DC
12V DC Power Output	1A	1A	1A	1A	1A
Control / Communication	Ethernet	Ethernet	Ethernet	Ethernet	Ethernet
Wavelength	850nm (940nm options available)	850nm (940nm options available)	850nm (940nm options available)	850nm (940nm options available)	850nm (940nm options available)
IP Rating	IP66	IP66	IP66	IP66	IP66
Temperature Range	-20° to +50°C (-4 to 122°F)	-20° to +50°C (-4 to 122°F)	-20° to +50°C (-4 to 122°F)	-20° to +50°C (-4 to 122°F)	-20° to +50°C (-4 to 122°F)
Colour	Black	Black	Black	Black	Black
Weight	1.65kg (3.6lbs)	2.25kg (5 lbs)	4.5kg (9.9lbs)	6kg (13.2lbs)	2 x 4.5kg (9.9lbs)
Dimensions	135 x 180 x 68mm 5" x 7" x 2.6" approx	209 x 178 x 67mm 8" x 7" x 3" approx	280 x 223 x 68mm 11" x 9" x 3" approx	423 x 226 x 68mm 17" x 9" x 3" approx	2 off 280 x 223 x 68mm 11" x 9" x 3" approx

External Power Supply (included)

Input	Universal 100-230V AC auto-sensing	Universal 100-230V AC auto-sensing	Universal 100-230V AC auto-sensing	Universal 100-230V AC auto-sensing	Universal 100-230V AC auto-sensing
Output	22W	30W	44W	66W	88W
Weights	1.7kg (3.75lbs)	1.7kg (3.75lbs)	2.0kg (4.4lbs)	2.3kg (5.1lbs)	2.3kg (5.1lbs)
Dimensions	181 x 287 x 107mm 8" x 12" x 4"	181 x 287 x 107mm 8" x 12" x 4"	181 x 287 x 107mm 8" x 12" x 4"	181 x 287 x 107mm 8" x 12" x 4"	181 x 287 x 107mm 8" x 12" x 4"

* Distances for typical ANPR/LPR applications



PULSESTAR w24



PULSESTAR w32



PULSESTAR w48



PULSESTAR w72



PULSESTAR w96

Lighting Drive Power (pulsed) *	110W	150W	220W	330W	440W
Angles & Typical Distances*	10°x10° 20°x10° 35°x10° Other angles available	10°x10° 20°x10° 35°x10° Other angles available	10°x10° 20°x10° 35°x10° Other angles available	10°x10° 20°x10° 35°x10° Other angles available	10°x10° 20°x10° 35°x10° Other angles available
Input	Universal 100-230V AC - comes with PSU (see details below) (24V DC options available - contact Raytec)	Universal 100-230V AC - comes with PSU (see details below) (24V DC options available - contact Raytec)	Universal 100-230V AC - comes with PSU (see details below) (24V DC options available - contact Raytec)	Universal 100-230V AC - comes with PSU (see details below) (24V DC options available - contact Raytec)	Universal 100-230V AC - comes with PSU (see details below) (24V DC options available - contact Raytec)
Beam Shape	Elliptical with HRT (Hot Spot Reduction Technology)	Elliptical with HRT (Hot Spot Reduction Technology)	Elliptical with HRT (Hot Spot Reduction Technology)	Elliptical with HRT (Hot Spot Reduction Technology)	Elliptical with HRT (Hot Spot Reduction Technology)
Beam Angle System	VARIO Interchangeable Lens System	VARIO Interchangeable Lens System	VARIO Interchangeable Lens System	VARIO Interchangeable Lens System	VARIO Interchangeable Lens System
Consumption	11W	15W	22W	33W	44W
LED type	Platinum Elite twin-core SMT LEDs	Platinum Elite twin-core SMT LEDs	Platinum Elite twin-core SMT LEDs	Platinum Elite twin-core SMT LEDs	Platinum Elite twin-core SMT LEDs
Number of LEDs	24	32	48	72	96
Typical Pulse Width	2 ms	2 ms	2 ms	2 ms	2 ms
Trigger Input	TTL - 3.3 - 24V DC	TTL - 3.3 - 24V DC	TTL - 3.3 - 24V DC	TTL - 3.3 - 24V DC	TTL - 3.3 - 24V DC
12V DC Power Output	1A	1A	1A	1A	1A
Control / Communication	Ethernet	Ethernet	Ethernet	Ethernet	Ethernet
Wavelength	White-Light	White-Light	White-Light	White-Light	White-Light
IP Rating	IP66	IP66	IP66	IP66	IP66
Temperature Range	-20° to +50°C (-4 to 122°F)	-20° to +50°C (-4 to 122°F)	-20° to +50°C (-4 to 122°F)	-20° to +50°C (-4 to 122°F)	-20° to +50°C (-4 to 122°F)
Colour	Silver	Silver	Silver	Silver	Silver
Weight	1.65kg (3.6lbs)	2.25kg (5 lbs)	4.5kg (9.9lbs)	6kg (13.2lbs)	2 x 4.5kg (9.9lbs)
Dimensions	135 x 180 x 68mm 5" x 7" x 2.6" approx	209 x 178 x 67mm 8" x 7" x 3" approx	280 x 223 x 68mm 11" x 9" x 3" approx	423 x 226 x 68mm 17" x 9" x 3" approx	2 off 280 x 223 x 68mm 11" x 9" x 3" approx

External Power Supply (included)

Input	Universal 100-230V AC auto-sensing	Universal 100-230V AC auto-sensing	Universal 100-230V AC auto-sensing	Universal 100-230V AC auto-sensing	Universal 100-230V AC auto-sensing
Output	11W	15W	22W	33W	44W
Weights	1.7kg (3.75lbs)	1.7kg (3.75lbs)	2.0kg (4.4lbs)	2.3kg (5.1lbs)	2.3kg (5.1lbs)
Dimensions	181 x 287 x 107mm 8" x 12" x 4"	181 x 287 x 107mm 8" x 12" x 4"	181 x 287 x 107mm 8" x 12" x 4"	181 x 287 x 107mm 8" x 12" x 4"	181 x 287 x 107mm 8" x 12" x 4"



VARIO2 VLK i6



VARIO2 VLK i4



VARIO2 VLK w4



VARIO2 VLK HYBRID

Max Distance	282m (925ft)	220m (722ft)	155m (509ft)	254m (833ft)
Angles and Max Distances	10°x10° - 282m (925ft) 35°x10° - 169m (554ft) 60°x25° - 99m (325ft) 80°x30° - 71m (233ft) 120°x50° - 42m (138ft)	10°x10° - 220m (722ft) 35°x10° - 120m (394ft) 60°x25° - 76m (249ft) 80°x30° - 51m (167ft) 120°x50° - 34m (112ft)	10°x10° - 155m (509ft) 35°x10° - 92m (302ft) 60°x25° - 49m (161ft) 80°x30° - 35m (115ft) 120°x50° - 25m (82ft)	10°x10° - 254m (833ft) IR and 124m (407ft) WL 35°x10° - 152m (499ft) IR and 73m (240ft) WL 60°x25° - 89m (292ft) IR and 39m (128ft) WL 80°x30° - 63m (207ft) IR and 28m (92ft) WL 120°x50° - 38m (125ft) IR and 20m (66ft) WL
Input	15-24V AC/DC	15-24V AC/DC	15-24V AC/DC	24V DC
Beam Shape	Elliptical with HRT (Hot spot Reduction Technology)	Elliptical with HRT (Hot spot Reduction Technology)	Elliptical with HRT (Hot spot Reduction Technology)	Elliptical with HRT (Hot spot Reduction Technology)
Beam Angle System	VARIO Interchangeable Lens System	VARIO Interchangeable Lens System	VARIO Interchangeable Lens System	VARIO Interchangeable Lens System
Consumption	61W (inc approx camera consumption) 25W per LED panel	37W (inc approx camera consumption) 13W per LED panel	59W (inc approx camera consumption) 24W per LED panel	53W (inc approx camera consumption) 21W per LED panel
LED type	Platinum Elite SMT LEDs	Platinum Elite SMT LEDs	Platinum Elite SMT LEDs	Platinum Elite SMT LEDs
Number of LEDs	24	18	24	24
WL Power output (luminous flux)	N/A	N/A	3726lm	2980lm
Wavelength	850nm	850nm (940nm options available)	White-Light	850nm and White-Light
IP Rating	IP66	IP66	IP66	IP66
Temperature Range	-50 to +50°C (-58 to 122°F)	-50 to +50°C (-58 to 122°F)	-50 to +50°C (-58 to 122°F)	-50 to +50°C (-58 to 122°F)
Colour Temperature (White-Light)	N/A	N/A	6000K~	6000K~
Colour Reproduction Index (White-Light)	N/A	N/A	>70	>70
Colour	Black	Black	Black	Black
Weight	5.4kg (12lbs)	5.4kg (12lbs)	5.4kg (12lbs)	5.4kg (12lbs)
Dimensions	336 x 302 x 173mm (13.2" x 11.9" x 6.8" approx)	336 x 302 x 173mm (13.2" x 11.9" x 6.8" approx)	336 x 302 x 173mm (13.2" x 11.9" x 6.8" approx)	336 x 302 x 173mm (13.2" x 11.9" x 6.8" approx)
Additional Features	Full lighting system with camera housing Accommodates up to 2 cameras : IP or Analogue Pre-wired and cable managed bracket Standard kit includes 10°x10°, 35°x10° and 60°x25° angles	Full lighting system with camera housing Accommodates up to 2 cameras : IP or Analogue Pre-wired and cable managed bracket Standard kit includes 10°x10°, 35°x10° and 60°x25° angles	Full lighting system with camera housing Accommodates up to 2 cameras : IP or Analogue Pre-wired and cable managed bracket Standard kit includes 10°x10°, 35°x10° and 60°x25° angles	Full lighting system with camera housing Accommodates up to 2 cameras : IP or Analogue Pre-wired and cable managed bracket Standard kit includes 10°x10°, 35°x10° and 60°x25° angles
Perfect Partner	Optional VARIO Remote control* VARIO PSU*	Optional VARIO Remote control* VARIO PSU*	Optional VARIO Remote control* VARIO PSU*	Optional VARIO Remote control* VARIO PSU*


**SPARTAN
FLOOD IR48**

**SPARTAN
FLOOD IR48 Emergency**

**SPARTAN
FLOOD IR24**

**SPARTAN
FLOOD IR24 Emergency**

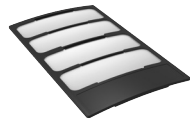
**SPARTAN
FLOOD IR12**

Certification	ATEX and IEC Ex rated for zone 1&2 Gas and Dust UL/CSA, including C1D2	ATEX and IEC Ex rated for zone 1&2 Gas and Dust UL/CSA, including C1D2	ATEX and IEC Ex rated for zone 1&2 Gas and Dust UL/CSA, including C1D2	ATEX and IEC Ex rated for zone 1&2 Gas and Dust UL/CSA, including C1D2	ATEX and IEC Ex rated for zone 1&2 Gas and Dust UL/CSA, including C1D2
Angles and Max Distances	10°x10° - 459m (1,506ft) 35°x10° - 224m (735ft) 60°x25° - 160m (525ft) 80°x30° - 103m (338ft) 120°x50° - 69m (226ft) + 30, 50 and 120° circular options	10°x10° - 459m (1,506ft) 35°x10° - 224m (735ft) 60°x25° - 160m (525ft) 80°x30° - 103m (338ft) 120°x50° - 69m (226ft) + 30, 50 and 120° circular options	10°x10° - 325m (1,066ft) 35°x10° - 158m (518ft) 60°x25° - 113m (371ft) 80°x30° - 73m (240ft) 120°x50° - 49m (161ft) + 30, 50 and 120° circular options	10°x10° - 325m (1,066ft) 35°x10° - 158m (518ft) 60°x25° - 113m (371ft) 80°x30° - 73m (240ft) 120°x50° - 49m (161ft) + 30, 50 and 120° circular options	10°x10° - 230m (755ft) 35°x10° - 112m (367ft) 60°x25° - 80m (262ft) 80°x30° - 52m (171ft) 120°x50° - 35m (115ft) + 30, 50 and 120° circular options
Input	110-254V 50/60Hz AC only Low voltage option also available.	110-254V 50/60Hz AC only Low voltage option also available.	110-254V 50/60Hz AC only Low voltage option also available.	110-254V 50/60Hz AC only Low voltage option also available.	110-254V 50/60Hz AC only Low voltage option also available.
Beam Shape	Elliptical or Circular	Elliptical or Circular	Elliptical or Circular	Elliptical or Circular	Elliptical or Circular
Beam Angle System	VARIO interchangeable lens system (elliptical) / Fixed (circular)	VARIO interchangeable lens system (elliptical) / Fixed (circular)	VARIO interchangeable lens system (elliptical) / Fixed (circular)	VARIO interchangeable lens system (elliptical) / Fixed (circular)	VARIO interchangeable lens system (elliptical) / Fixed (circular)
Consumption	136W	139W	68W	71W	34W
LED type	Platinum Elite SMT LEDs	Platinum Elite SMT LEDs	Platinum Elite SMT LEDs	Platinum Elite SMT LEDs	Platinum Elite SMT LEDs
Number of LEDs	48	48	24	24	12
Wavelength	850nm	850nm	850nm	850nm	850nm
IP Rating	IP66 and IP67	IP66 and IP67	IP66 and IP67	IP66 and IP67	IP66 and IP67
Temperature Range	-50°C to +55°C (-58°F to 131°F)	-20°C to +55°C (-4°F to 131°F)	-50°C to +55°C (-58°F to 131°F)	-20°C to +55°C (-4°F to 131°F)	-50°C to +55°C (-58°F to 131°F)
Colour	Silver/Grey	Silver/Grey	Silver/Grey	Silver/Grey	Silver/Grey
Weight	16kg (35.2lbs)	20kg (44lbs)	8kg (17.6lbs)	10kg (22lbs)	5kg (11lbs)
Dimensions	291 x 438 x 151mm (11.4 x 17.2 x 5.9")	291 x 438 x 215mm (11.4 x 17.2 x 8.5")	291 x 247 x 150mm (11.5 x 9.7 x 6")	291 x 247 x 215mm (11.5 x 9.7 x 8.5")	192 x 206 x 170mm (7.6 x 8.1 x 6.7")
Additional Features	CoolExtrude™ Thermal Management Removable PSU and LED modules Smart access wiring system T4, T5 and T6 Variants (T4 as standard)	CoolExtrude™ Thermal Management Removable PSU and LED modules Smart access wiring system T4, T5 and T6 Variants (T4 as standard)	CoolExtrude™ Thermal Management Removable PSU and LED modules Smart access wiring system T4, T5 and T6 Variants (T4 as standard)	CoolExtrude™ Thermal Management Removable PSU and LED modules Smart access wiring system T4, T5 and T6 Variants (T4 as standard)	CoolExtrude™ Thermal Management Removable PSU and LED modules Smart access wiring system T4, T5 and T6 Variants (T4 as standard)

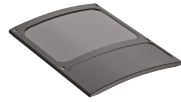
Emergency Battery Back-up

Battery	Ni/Cd 12V 4.5Ah	Ni/Cd 12V 4.5Ah
Duration	Up to 90mins at 25% power (1x battery unit) Other options available	Up to 90mins at 50% power (1x battery unit) Other options available
Charge Time	20 hours	20 hours

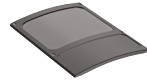
VARIO LENSES



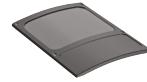
VARIO i16 LENS



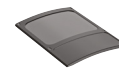
VARIO i8 LENS



VARIO i6 LENS



VARIO i4 LENS



VARIO i2 LENS



VARIO w16 LENS



VARIO w8 LENS



VARIO w4 LENS



VARIO w2 LENS

Description	Lens insert for VARIO i16	Lens insert for VARIO i8	Lens insert for VARIO i6	Lens insert for VARIO i4	Lens insert for VARIO i2	Lens insert for VARIO w16	Lens insert for VARIO w8	Lens insert for VARIO w4	Lens insert for VARIO w2
Variations	35° x 10° 60° x 25° 80° x 30° 120° x 50°	35° x 10° 60° x 25° 80° x 30° 120° x 50°	35° x 10° 60° x 25° 80° x 30° 120° x 50°	35° x 10° 60° x 25° 80° x 30° 120° x 50°	35° x 10° 60° x 25° 80° x 30° 120° x 50°	35° x 10° 60° x 25° 80° x 30° 120° x 50°	35° x 10° 60° x 25° 80° x 30° 120° x 50°	35° x 10° 60° x 25° 80° x 30° 120° x 50°	35° x 10° 60° x 25° 80° x 30° 120° x 50°

VARIO ACCESSORIES



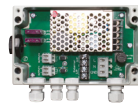
VARIO REMOTE



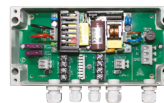
DAYTIME SET-UP TOOL

Description	Remote control to enable advanced features on VARIO	Daytime set-up tool for VARIO and other Raytec illuminators
-------------	---	---

VARIO POWER SUPPLY UNITS



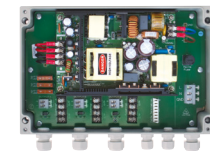
VARIO PSU 20W



VARIO PSU 50W



VARIO PSU 100W



VARIO PSU 150W

Designed to power any VARIO illuminator, including VARIO IP, with 24V output and CAT5 connectivity. One PSU can power multiple illuminators

Description	20W - powers 1x VARIO 2 series illuminator	50W - powers 2x VARIO 4 series illuminators*	100W - powers 2x VARIO 8 series illuminators*	150W - powers 3x VARIO 8 series illuminators*
-------------	--	--	---	---

* or any combination of units within equivalent max power

VARIO UNIVERSAL BRACKETS



VUB-POLE



VUB-WALL



VUB-PLATE-3x2



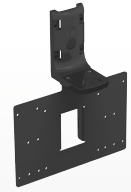
VUB-PLATE-3x4



VUB-PLATE-3x8



VUB-PLATE-1x16



VUB-PLATE-PSU

Description	Universal Bracket for custom mounting and configuration of all VARIO illuminators		VUB Plates allow mounting of multiple illuminators and PSUs*				
	Pole Mount Bracket	Wall Mount Bracket	Allows mounting of 3x VARIO 2 series illuminators**	Allows mounting of 3x VARIO 4 series illuminators**	Allows mounting of 3x VARIO 8 series illuminators**	Allows mounting of 1x VARIO 16 series illuminator**	Allows mounting of any 1x VARIO PSU
*VUB Plates are to be used with VUB-POLE and VUB-WALL brackets							**Various configurations of VARIO panel sizes and positions possible – see VUB Bracket Summary

STANDARD BRACKETS



SB1



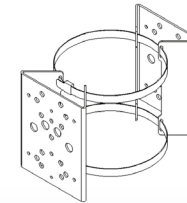
DB2



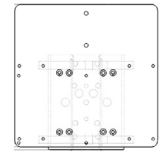
WB1



PBC1



PBC2



PBC-PSU-ADAP

Description	Single unit bracket for Top Pan/Tilt System	Double unit bracket for Top Pan/Tilt System	Wall Bracket - L Shape	Pole Bracket Clamp for 1 x illuminator	Pole Bracket Clamp for 2 x illuminators	Adaptor to convert 1 mount on PBC1 or PBC2 to fit a PSU
-------------	---	---	------------------------	--	---	---

URBAN BRACKETS



UB-WB



UB-TS-S



UB-TS-T



UB-HB-S



UB-HB-T

Description	Cable Managed wall bracket for Urban illuminators	Cable managed stub bracket for 1 x illuminator, 90 degree	Cable managed stub bracket for 2 x illuminators, 90 degree	Cable managed hockey bracket for 1 x illuminator	Cable managed hockey bracket for 2 x illuminators
Variations		Flat 5 degree uplift	Flat 5 degree uplift		

Lighting Design Service

Our team of experts can design a lighting scheme tailored to your individual requirements. This service offers -

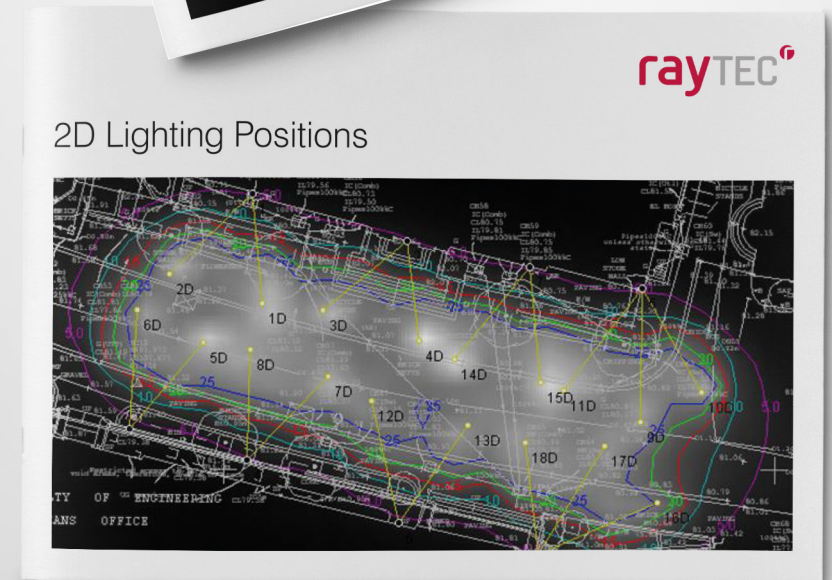
- Full Site 3D Modelling
- Lighting Scheme Video
- 3D & 2D Illuminance Mapping
- 3D & 2D Lighting Positions
- Simulated Infra-Red Images

Consultant Specification Data

Raytec's latest range of VARIO2 illuminators is available with POWERS scientific test data to help security professionals specify with confidence. POWERS data provides a full understanding of how your illuminator will perform

Custom Built Product Design

We love to solve problems with Lighting! Speak to our special operations division about your bespoke project or challenging application.



Who are Raytec?

We are the world leaders in LED lighting for security and safety critical applications, providing a range of LED illuminators to improve the safety of any area at night and to improve the performance of any surveillance system under darkness.

Founded in 2005, Raytec have two offices, located in Northumberland, UK and Ottawa, Canada.

A History of World Firsts

Raytec are committed to innovation + illumination and have always looked to lead lighting trends in the market. The Raytec portfolio includes several product firsts such as:

- IP Lighting
- Adaptive Illumination™
- VARIO Interchangeable Lens Technology
- Hot-Spot Reduction Technology
- Hybrid Lighting
- PoE Lighting
- Explosion Protected LED Lighting
- Digital Zoom Lighting

UK Designed & Manufactured

All Raytec illuminators are designed and manufactured at our UK HQ and we're so confident in our quality that all our illuminators come with a 5 year warranty. Raytec and all our products are also ISO9001 and ISO14001 certified.

Our Distance Promise

To ensure security professionals can achieve high quality video surveillance images, all Raytec illuminators deliver a minimum light level on scene of $0.35\mu\text{W}/\text{cm}^2$ (Infra-Red) and 3 lux (White-Light) at their maximum stated distance. With Raytec you can be sure that our distance performance is real and easily achievable.





An Illuminating Choice
for Any Application

Global HQ

T: +44 (0) 1670 520055
F: +44 (0) 1670 819760
sales@raytecctv.com

Americas

T: +1 613 270 9990
T: +1 888 505 8335 (Toll Free)
ussales@raytecctv.com

www.raytecctv.com