

Specific Usage

Examples of adapter combinations for lenses and cameras.
Please contact our sales department for details.

See video clips of installation.



Combination with F-mount

Combination with M72 mount

Combination with M95 mount

High Resolution Line Macro Lens

Product page URL



VS-L(V) **LineScan** SERIES

8K, 12K, 16K sensor compatible
Infinite combination line macro lens



Specification List

Model no.	Image Circle	Standard magnification	Working F	OI	Relative Illuminance	Compatible mounts
VS-L8528/M72	Φ62	0.05x - 0.25x	3.0 - 3.5	1859.9 - 503.0	70%	M72
VS-L8528LM/M72	Φ62	0.05x - 0.2x	2.9 - 3.4	1854.0 - 592.0	71%	M72
VS-L6035/V	Φ62	0.165x	4.1	530.2	52%	F/M72
VS-L8540/V	Φ62	0.28x	5.1	478.7	72%	F/M72
VS-L8540-06/V	Φ62	0.6x	6.4	345.2	77%	F/M72
VS-L7528/M72-31.8	Φ73	(∞)0.05x - 0.2x	3.0 - 3.4	1659.2 - 534.5	45%	M72
VS-L5045FL/M72S	Φ75	(∞)0.03x - 0.15x	4.7 - 5.3	1884.9 - 495.2	48%	M72
VS-L7540/V	Φ82	0.8x - 1.2x	7.7 - 9.6	282.7 - 281.4	52%	F/M72/M95
VS-L12025-5/M67S	Φ86.4	5.0x	15	818.7	100%	F/M72/M95
VS-L12040-2/M67S	Φ90	2.0x	12.1	548.6	97%	F/M72/M95
VS-L12040-2.5/M67S	Φ90	2.5x	13.7	593.2	98%	F/M72/M95
VS-L12028-3.3/M67S	Φ90	3.3x	12.6	625.4	99%	F/M72/M95
VS-L12056-03/V	Φ90	0.225x - 0.375x	6.9 - 7.7	803.2 - 603.0	57%	F/M72/M95
VS-L12056-05/V	Φ90	0.375x - 0.625x	7.7 - 9.1	604.4 - 503.9	60%	F/M72/M95
VS-L12056-075/V	Φ90	0.625x - 0.875x	9.0 - 10.3	509.6 - 483.8	63%	F/M72/M95
VS-L12056-1/V	Φ90	0.875x - 1.125x	10.3 - 11.7	483.1 - 482.7	69%	F/M72/M95
VS-L12035-05/V	Φ90	0.45x - 0.55x	5.1 - 5.4	554.5 - 518.0	83%	F/M72/M95
VS-L12035-075/V	Φ90	0.7x - 0.8x	6.0 - 6.3	485.8 - 476.4	84%	F/M72/M95
VS-L12035-1/V	Φ90	0.9x - 1.1x	6.7 - 7.4	466.5 - 466.3	84%	F/M72/M95

*Standard and custom mounts other than those listed above are also available. Please contact us for details. (ex. M42, TFL, M58, M90, etc.)

International Sales Offices

VST Europe (Amsterdam)
TEL: +31-20-305-1310

VST Vietnam (Hanoi)
TEL: +84-24-6327-8566

VST Korea (Seoul)
TEL: +82-2-2183-3848

VST America (Chicago)
TEL: +1-847-952-3800

VST Europe (Paris)
TEL: +33-6-51-12-12-01

VST India (Bengaluru)
TEL: +91-80888-31893

VST Taiwan (Taipei)
TEL: +886-2-2531-2036

VST America (Dallas)
TEL: +1-972-773-9686

VST EU (Poland)
TEL: +48-22-492-6683

VST Shenzhen (Shenzhen)
TEL: +86-755-8273-1420

VST Taiwan (Hsinchu)
TEL: +886-3-668-1381

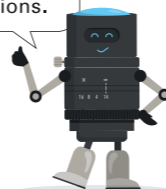
VST Mexico (Tijuana)
TEL: +52-664-380-6169

VST Thailand (Bangkok)
TEL: +662-278-6808

VST Shenzhen (Shanghai)
TEL: +86-21-6255-0725

VST Taiwan (Tainan)
TEL: +886-6-5837016

Please feel free to contact us if you have any questions.



Various magnifications, Image circles, and Mounts can be supported by combining the lens body with an adapter.

Product Lineup Chart

Based on the desired "field of view size" and "detection size," it is possible to determine the sensor and lens magnification to utilize.

Sensor Size	Image Circle	Model no.	Mag. (WD)																
			0.03	0.05	0.1	0.2	0.3	0.4	0.5	0.6	0.7	0.8	0.9	1.0	2.0	3.0	4.0	5.0	
8K 7μm 16K 3.5μm	~φ62	VS-L8528/M72			0.05 - 0.25x (1722 - 366mm)														
		VS-L8528LM/M72			0.05 - 0.2x (1724 - 462mm)														
		VS-L6035/V			0.165x (349mm)														
		VS-L8540/V				0.28x (345mm)													
		VS-L8540-06/V									0.6x (187mm)								
12K 5μm	~φ75	VS-L7528/M72-31.8			∞ 0.05 - 0.2x (1544 - 419mm)														
		VS-L5045FL/M72S			∞ 0.03 - 0.15x (1763 - 373mm)														
16K 5μm 8K 10μm	~φ82	VS-L7540/V											0.8x - 1.2x (132 - 101mm)						
12K 7μm	~φ86.4	VS-L12025-5/M67S															5.0x (78.7mm)		
		VS-L12040-2/M67S													2.0x (127mm)				
		VS-L12040-2.5/M67S													2.5x (115mm)				
		VS-L12028-3.3/M67S														3.3x (82.7mm)			
		VS-L12056-03/V				0.225 - 0.375x (633 - 414mm)													
		VS-L12056-05/V							0.375 - 0.625x (417 - 285mm)										
		VS-L12056-075/V									0.625 - 0.875x (284 - 228mm)								
		VS-L12056-1/V											0.875 - 1.125x (228 - 196mm)						
		VS-L12035-05/V						0.45 - 0.55x (360 - 311mm)											
		VS-L12035-075/V									0.7 - 0.8x (260 - 238mm)								
VS-L12035-1/V											0.9 - 1.1x (229 - 204mm)								

*WD is shown in parentheses.
*May be applicable outside of the standard magnification, depending on the adapter combination.

Applications

Nonwoven fabrics, Films, Printing, Gravure Inspection, etc.

Often select a low magnification (0.5x or less) to obtain a wide field of view considering the overall size of the device.



Semiconductor, FPD, PCB board Inspection, etc.

Often select a high magnification (0.5x or more) to view the object with precision.



Issues Don't want the brightness and resolving power to change between the center and the periphery!

► Environment: The entire field of view is used, and several cameras may be used side by side.

L(V) can...

- Designed to provide high performance throughout the entire lens range enabling use for inspection right to the periphery of the image
- Focus on uniformity of brightness across the entire image by minimizing vignetting

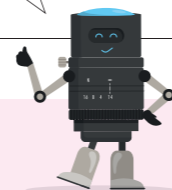
Issues Need bright image and also secure depth of field because of the vibrating environment!

► Environment: Objects are conveyed at high speed in Roll to Roll

L(V) can...

- Bright F Number design for high-speed inspection
- Low-magnification model ensures depth of field

L(V) solves the problem!



Issues Wish to secure a wide field of view and reduce the number of image taking. Want to inspect the image more precisely and accurately.

► Environment: Wish to use the entire field of view and proceed with the inspection efficiently.

L(V) can...

- High contrast to meet resolution requirements
- Models with reduced chromatic aberration maintain performance even when using color cameras and white lighting.

Compatible line sensor table (φ50mm or larger)

Type	Size
8K 7μm	57.3mm
8K 10μm	81.9mm
12K 5μm	61.4mm
12K 7μm	86.0mm
16K 3.5μm	57.3mm
16K 5μm	81.9mm

Standard compatible camera mount

Compatible camera	Flange Back	Compatible mounts
F-Mount Camera	46.5mm	F-Mount
NED	31.8mm	M72(P=0.75)
TELEDYNE DALSA/TAKEX	19.55mm	M72(P=0.75)
TELEDYNE DALSA	12mm	M72(P=0.75)
TELEDYNE e2V	9.4mm	M95(P=1)